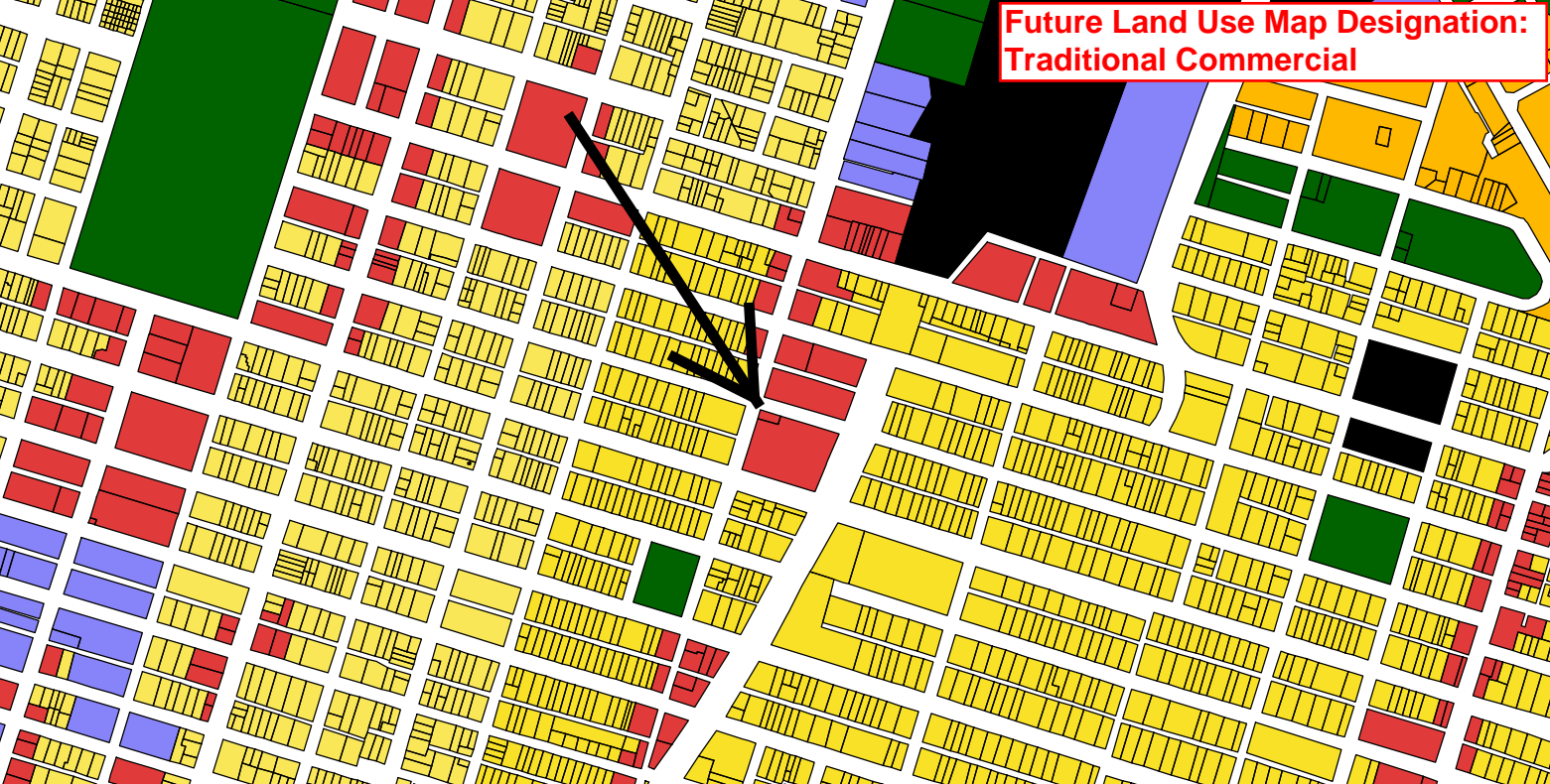
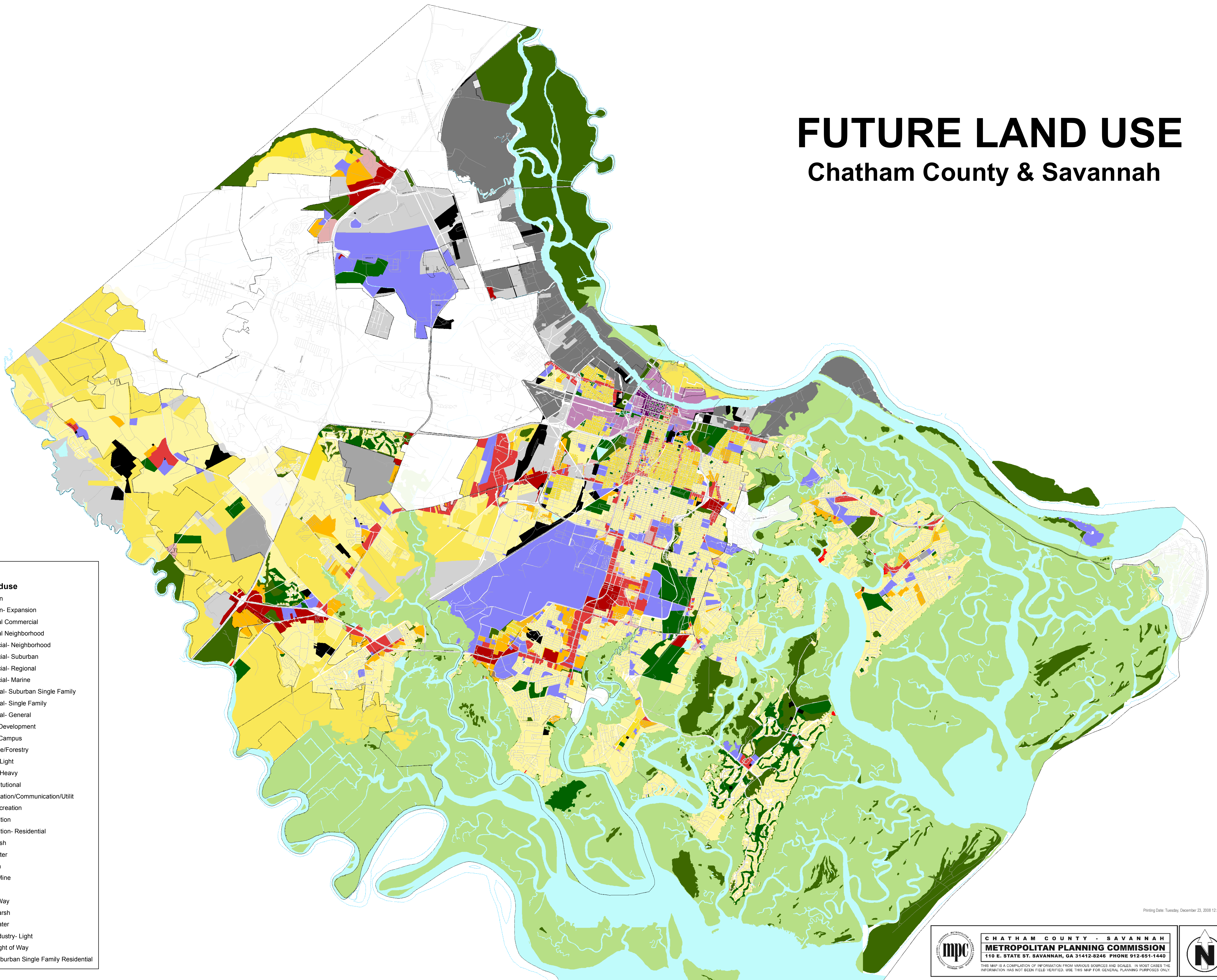


**Future Land Use Map Designation:  
Traditional Commercial**



# FUTURE LAND USE

## Chatham County & Savannah



- Legend**
- Future Landuse**
- Downtown
  - Downtown- Expansion
  - Traditional Commercial
  - Traditional Neighborhood
  - Commercial- Neighborhood
  - Commercial- Suburban
  - Commercial- Regional
  - Commercial- Marine
  - Residential- Suburban Single Family
  - Residential- Single Family
  - Residential- General
  - Planned Development
  - Planned Campus
  - Agriculture/Forestry
  - Industry- Light
  - Industry- Heavy
  - Civic/Institutional
  - Transportation/Communication/Utilit
  - Parks/Recreation
  - Conservation
  - Conservation- Residential
  - Tidal Marsh
  - Open Water
  - Transition
  - Surface Mine
  - Landfill
  - Right of Way
  - AICO+Marsh
  - AICO+Water
  - AICO+Industry- Light
  - AICO+Right of Way
  - AICO+Suburban Single Family Residential

Printing Date: Tuesday, December 23, 2008 12:50 PM



**CHATHAM COUNTY - SAVANNAH**  
**METROPOLITAN PLANNING COMMISSION**  
 110 E. STATE ST. SAVANNAH, GA 31412-8246 PHONE 912-651-1440



THIS MAP IS A COMPILATION OF INFORMATION FROM VARIOUS SOURCES AND SCALES. IN MOST CASES THE INFORMATION HAS NOT BEEN FIELD VERIFIED. USE THIS MAP FOR GENERAL PLANNING PURPOSES ONLY.