

# TAPESTRY HOTEL - SAVANNAH 301 TATTNALL STREET

Historic Board of Review Petition  
Part I: Height and Mass

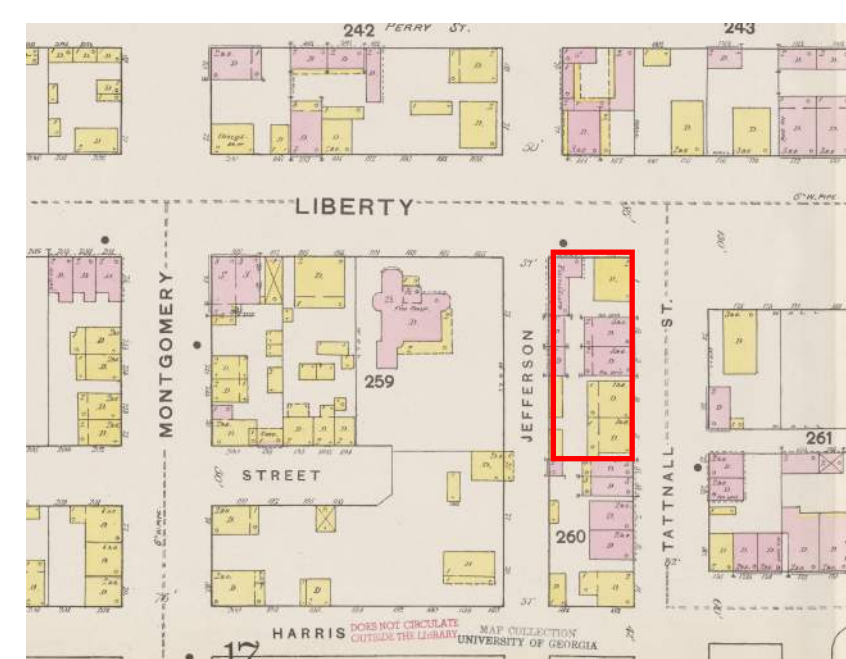
SEPTEMBER 12, 2024



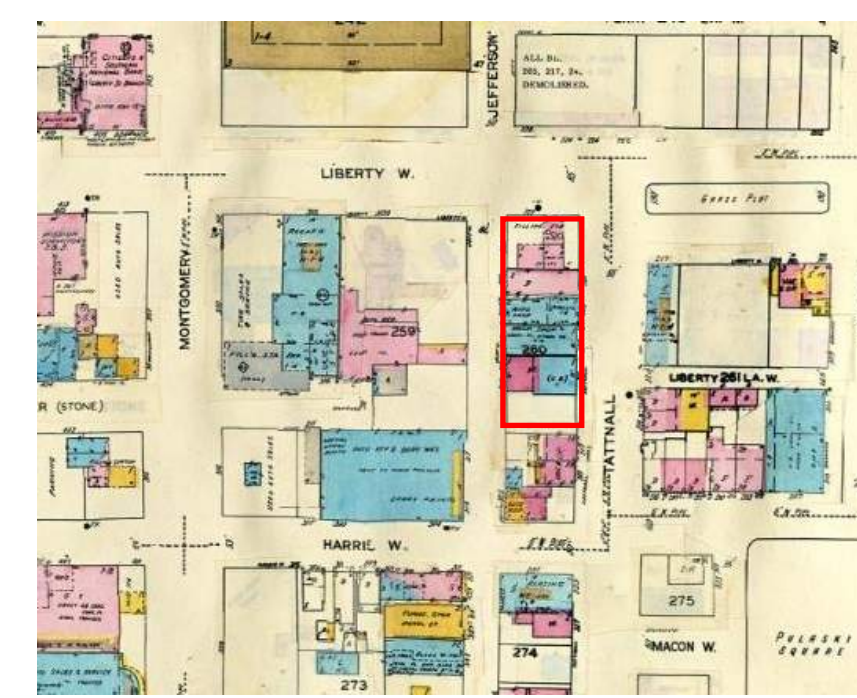
## SANBORN MAPS



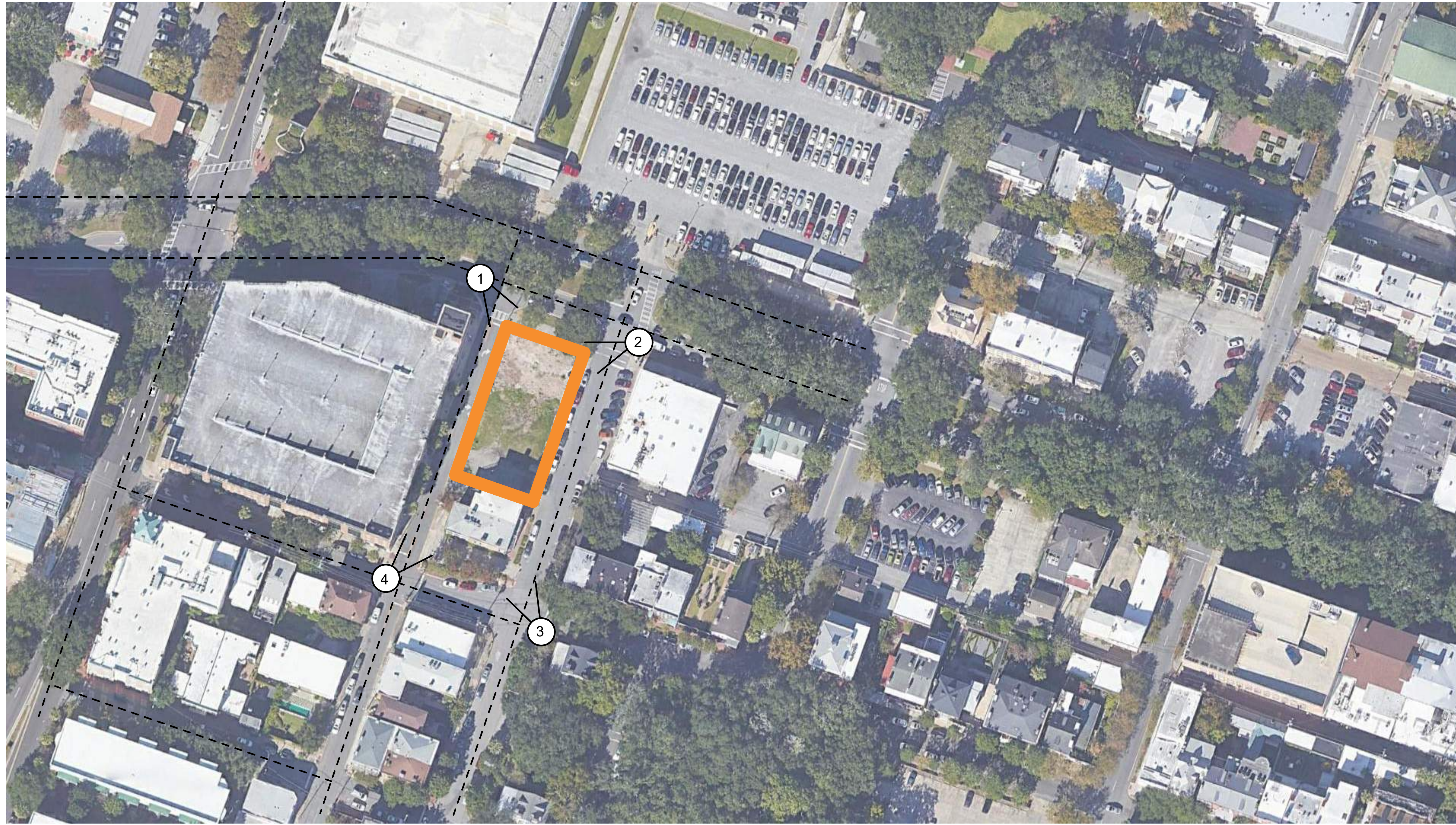
1884



1916



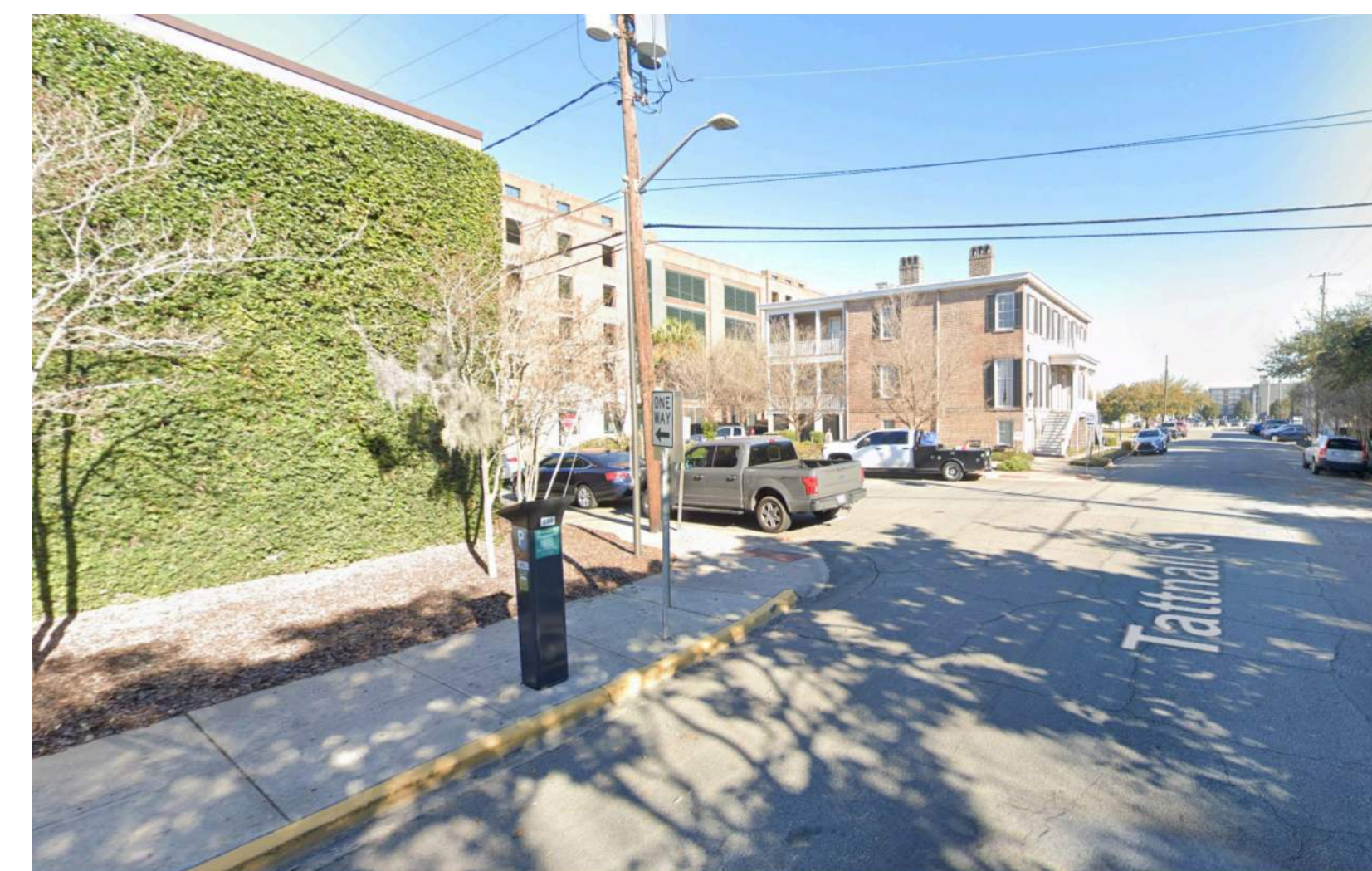
1965 OVERLAY



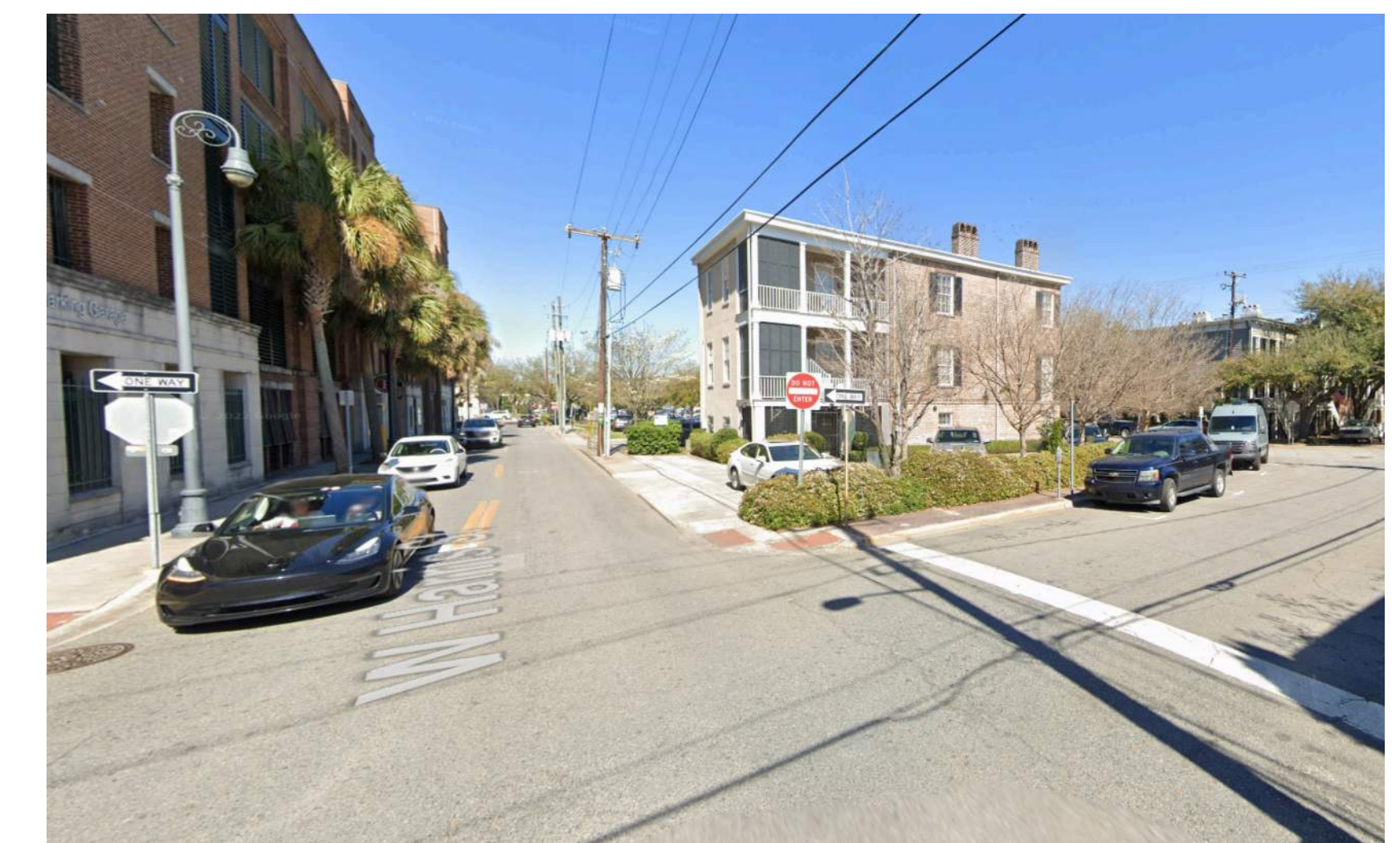
① LIBERTY STREET - SOUTHEAST VIEW



② LIBERTY STREET - SOUTHWEST VIEW



③ TATTNALL STREET - NORTHWEST VIEW



④ W. HARRIS STREET - NORTHEAST VIEW



#	SITE PLAN NOTES BY NUMBER
1	6 STORY PORTION OF BUILDING MASS
2	5 STORY PORTION OF BUILDING MASS
3	MAIN LOBBY ENTRY COURTYARD OFF TATTNALL STREET
4	EXISTING SIDEWALK RIGHT-OF-WAY
5	AWNINGS OVER RIGHT-OF-WAY. ENCROACHMENT PERMIT TO BE SUBMITTED SEPARATE TO THIS PACKAGE
6	REAR SETBACK PROVIDED AT SOUTH ELEVATION TO MAINTAIN CHARACTER OF ADJACENT HISTORIC STRUCTURE

LOT COVERAGE (D-N ZONING)	
MAX. LOT COVERAGE	PROPOSED LOT COVERAGE
75%	74.85%





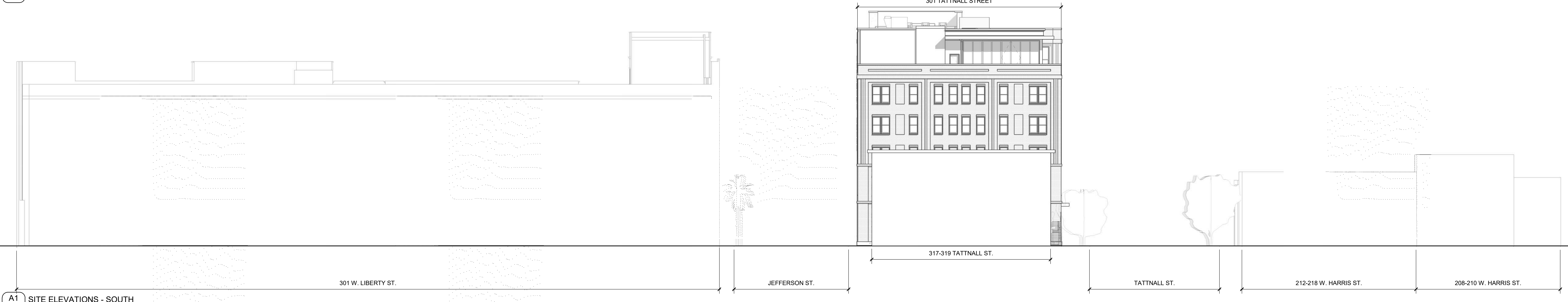
D1 SITE ELEVATIONS - EAST (TATTNALL STREET)  
A-052 1/16" = 1'-0"



C1 SITE ELEVATIONS - WEST (JEFFERSON STREET)  
A-052 1/16" = 1'-0"



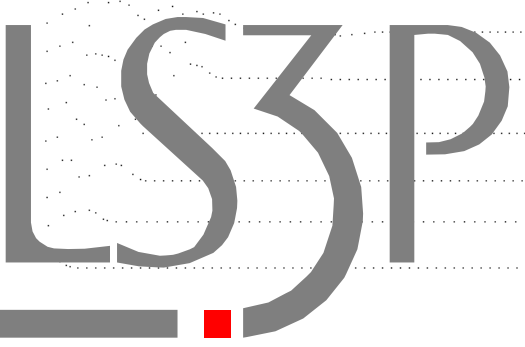
B1 SITE ELEVATION - NORTH (LIBERTY STREET)  
A-052 1/16" = 1'-0"

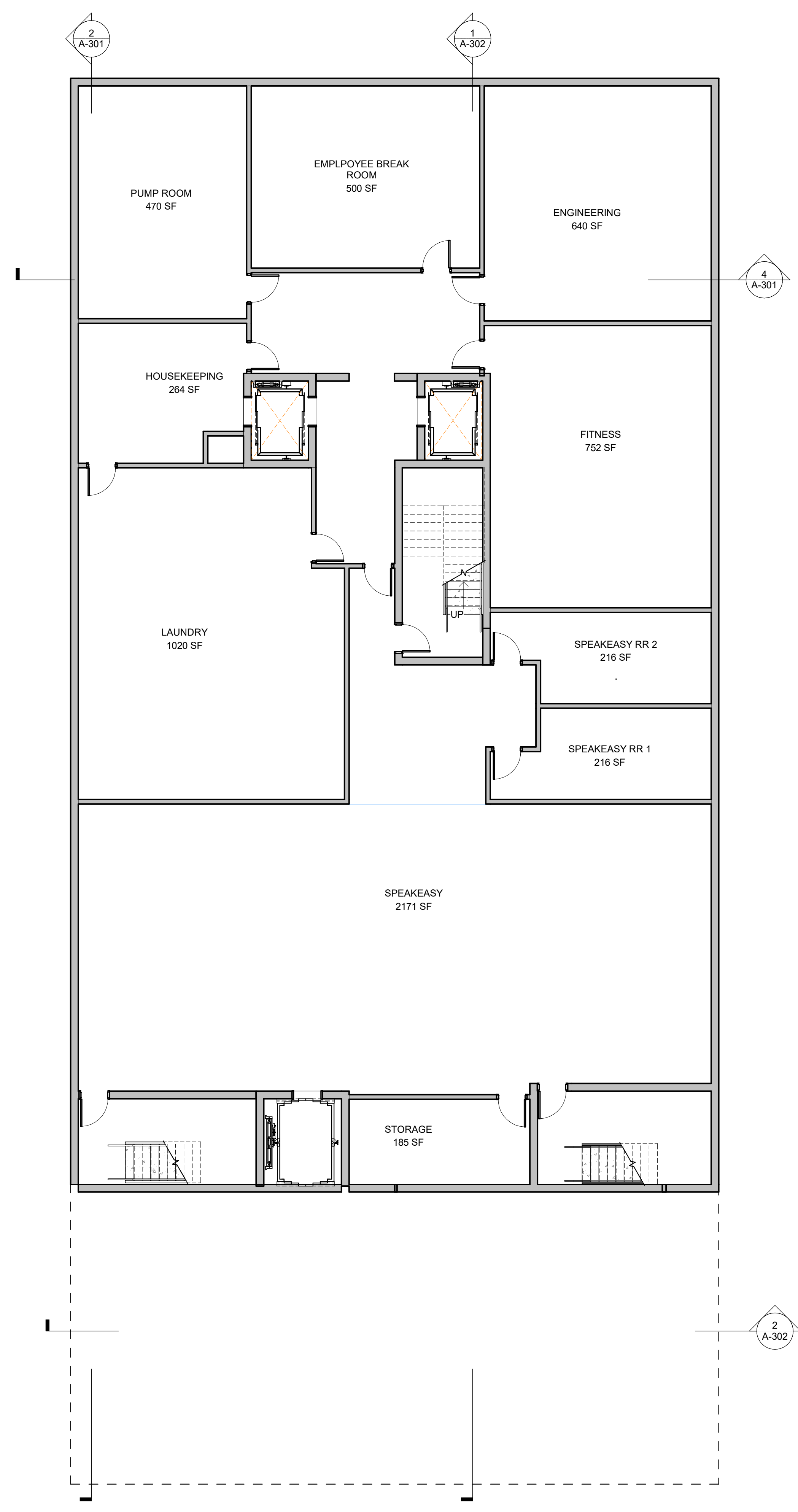


A1 SITE ELEVATIONS - SOUTH  
A-052 1/16" = 1'-0"

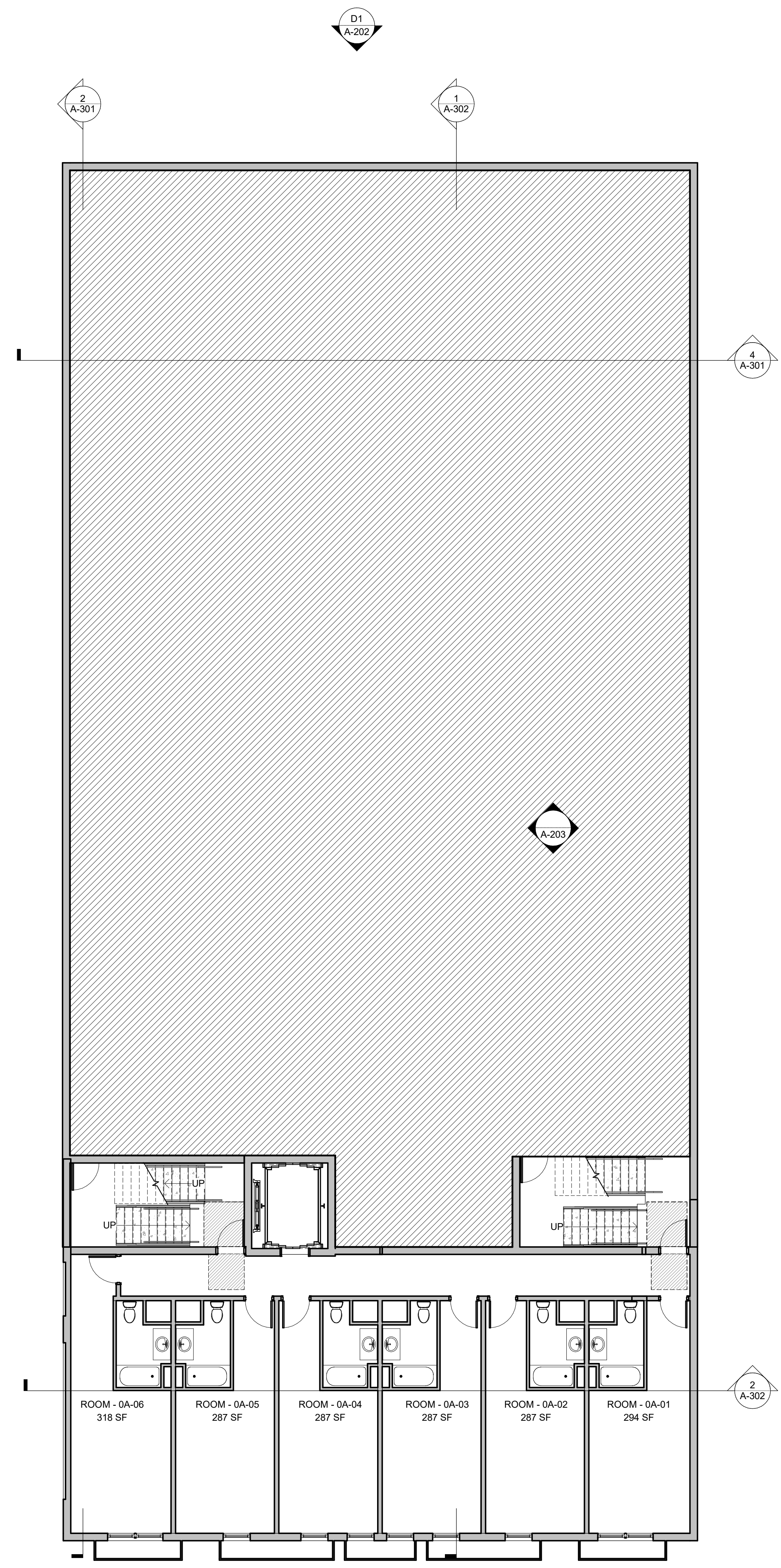
**A-052 SITE ELEVATIONS**

XXXX.XX.XX





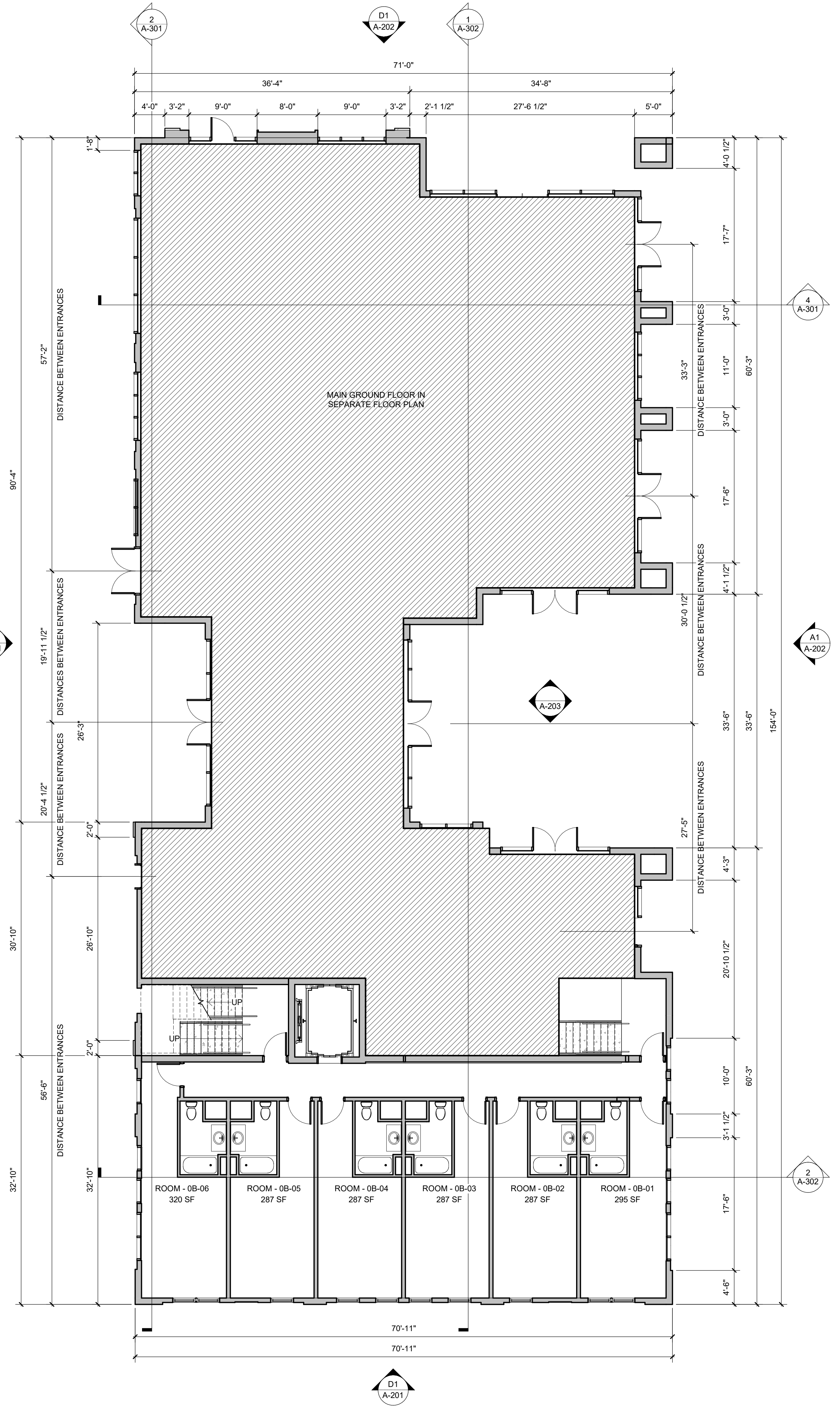
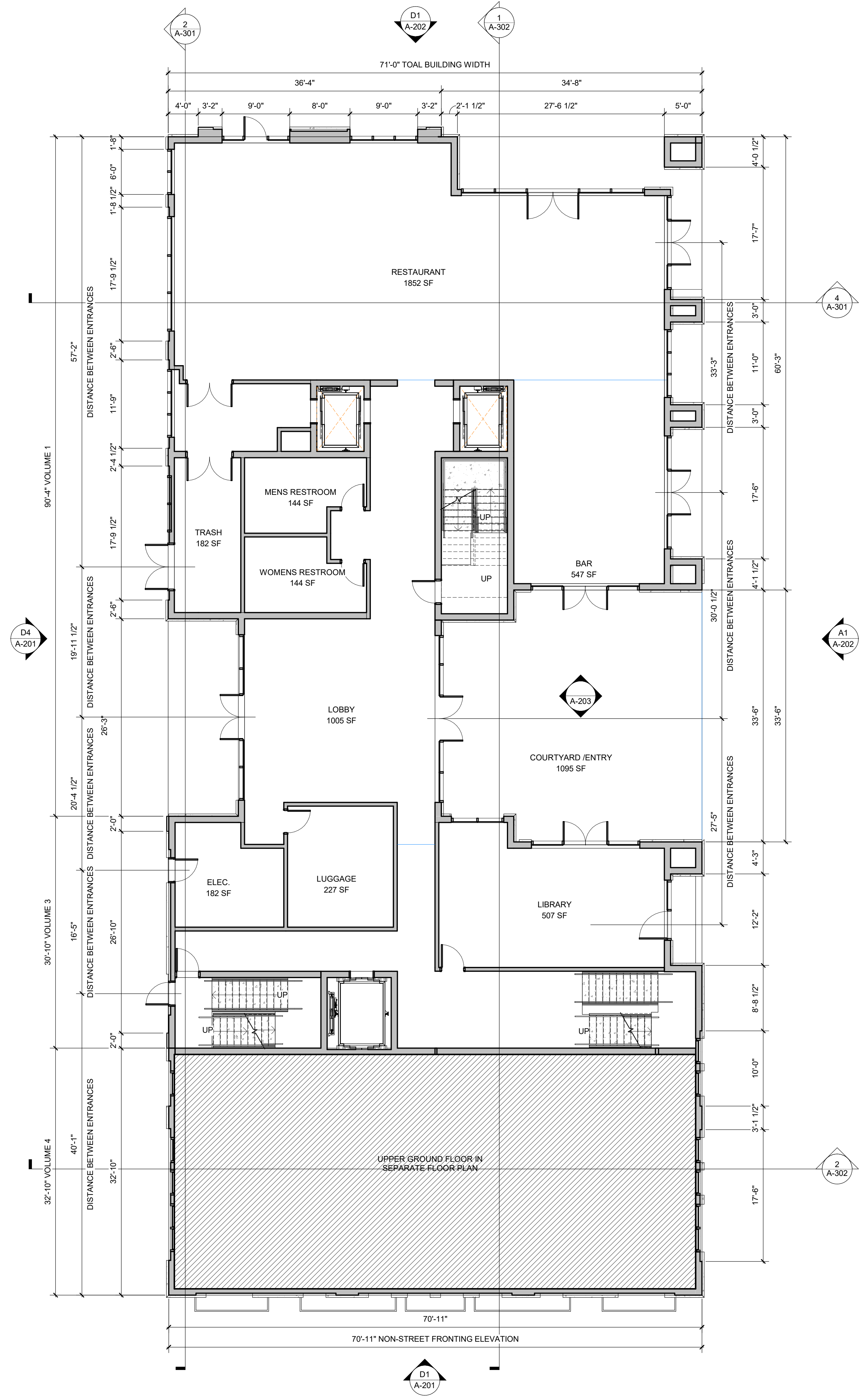
**A1 FLOOR PLAN - BASEMENT**  
1/8" = 1'-0"



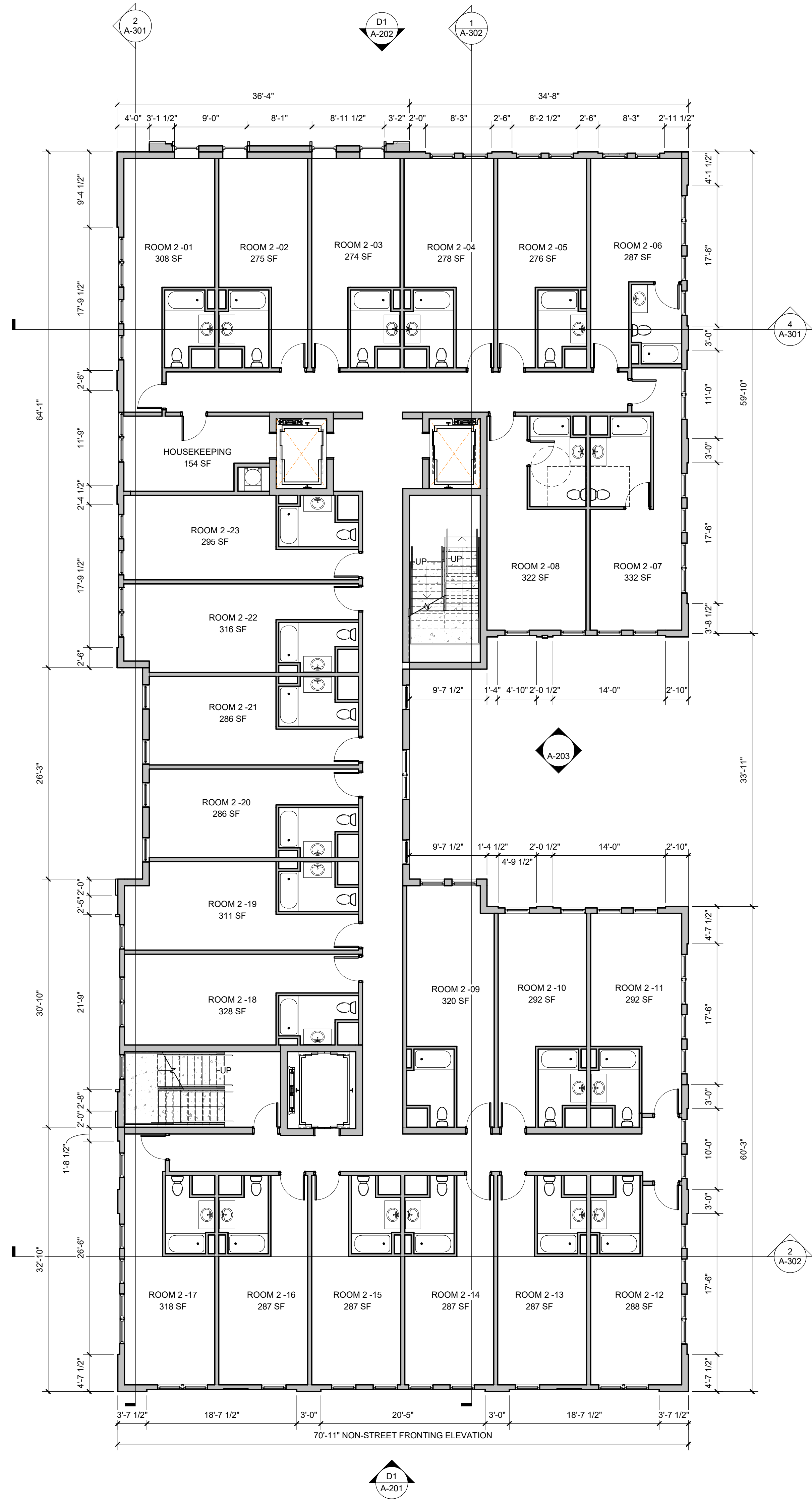
**A3 FLOOR PLAN- LEVEL 1**  
1/8" = 1'-0"

**A-100 FLOOR PLAN- BASEMENT + LOWER GROUND FLOOR**

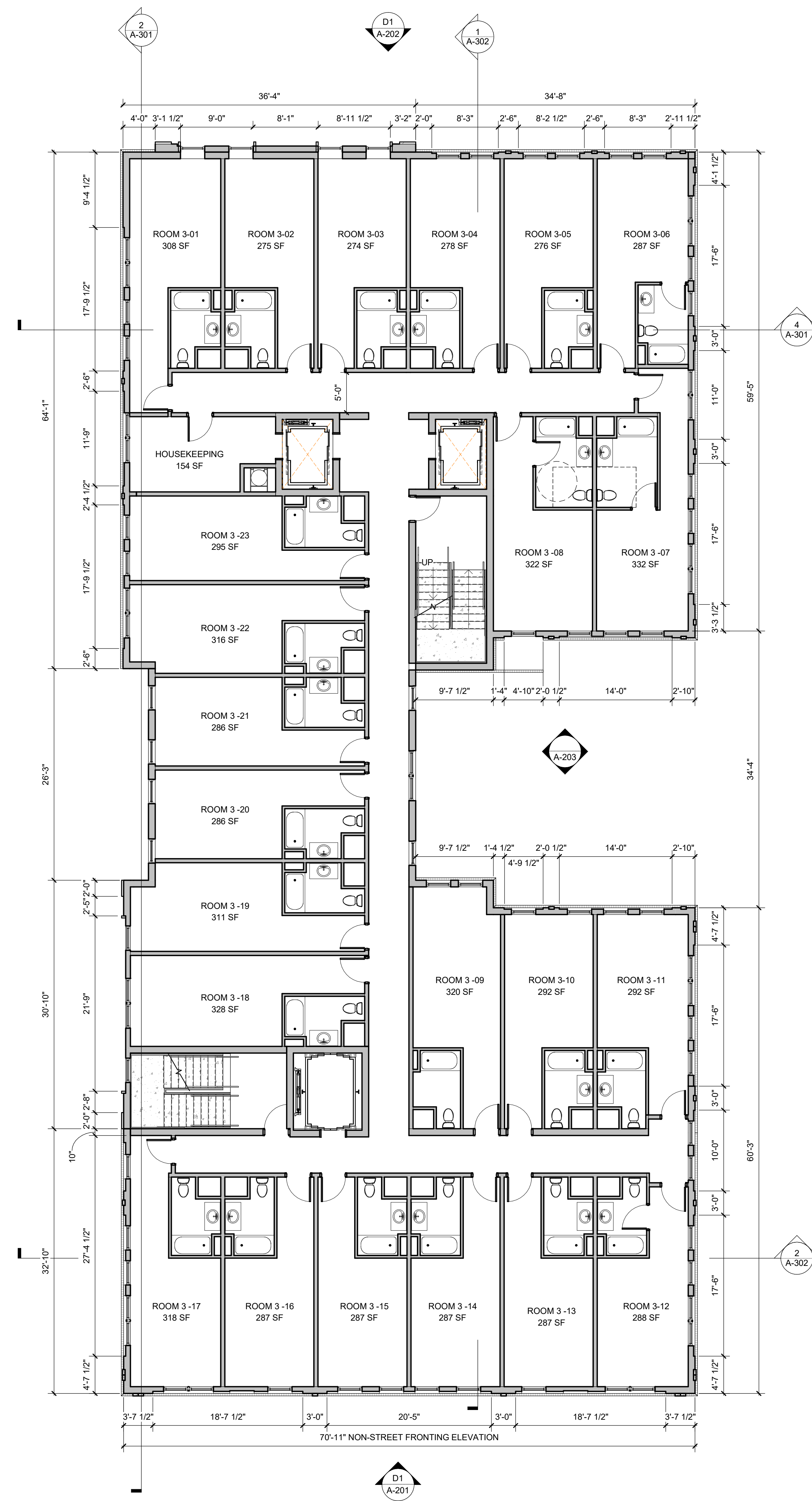




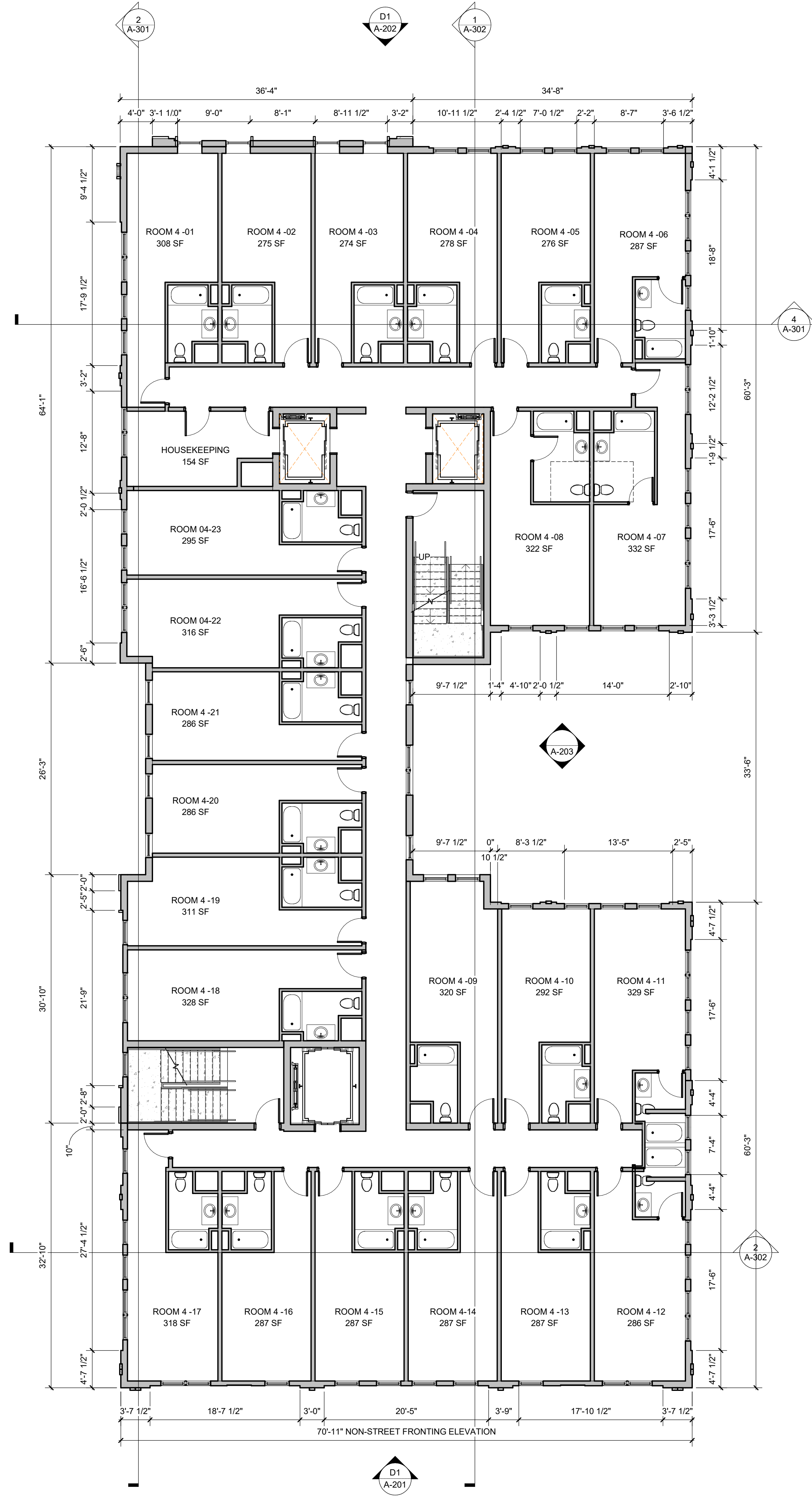
**A-101 FLOOR PLANS - GROUND FLOOR + UPPER GROUND FLOOR**



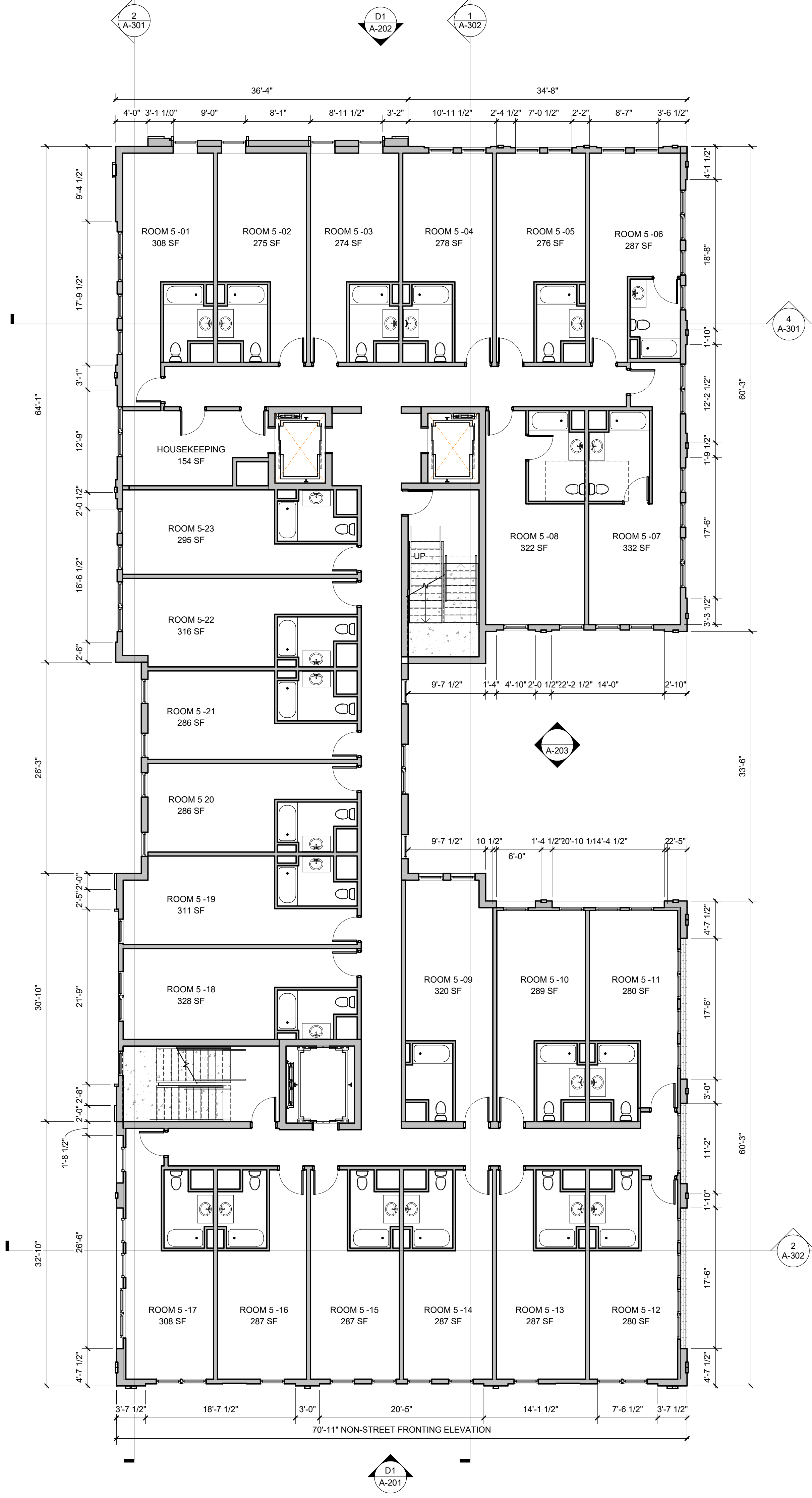
**A1 FLOOR PLAN-LEVEL 2**  
1/8" = 1'-0"



**A3 FLOOR PLAN-LEVEL 3**  
1/8" = 1'-0"

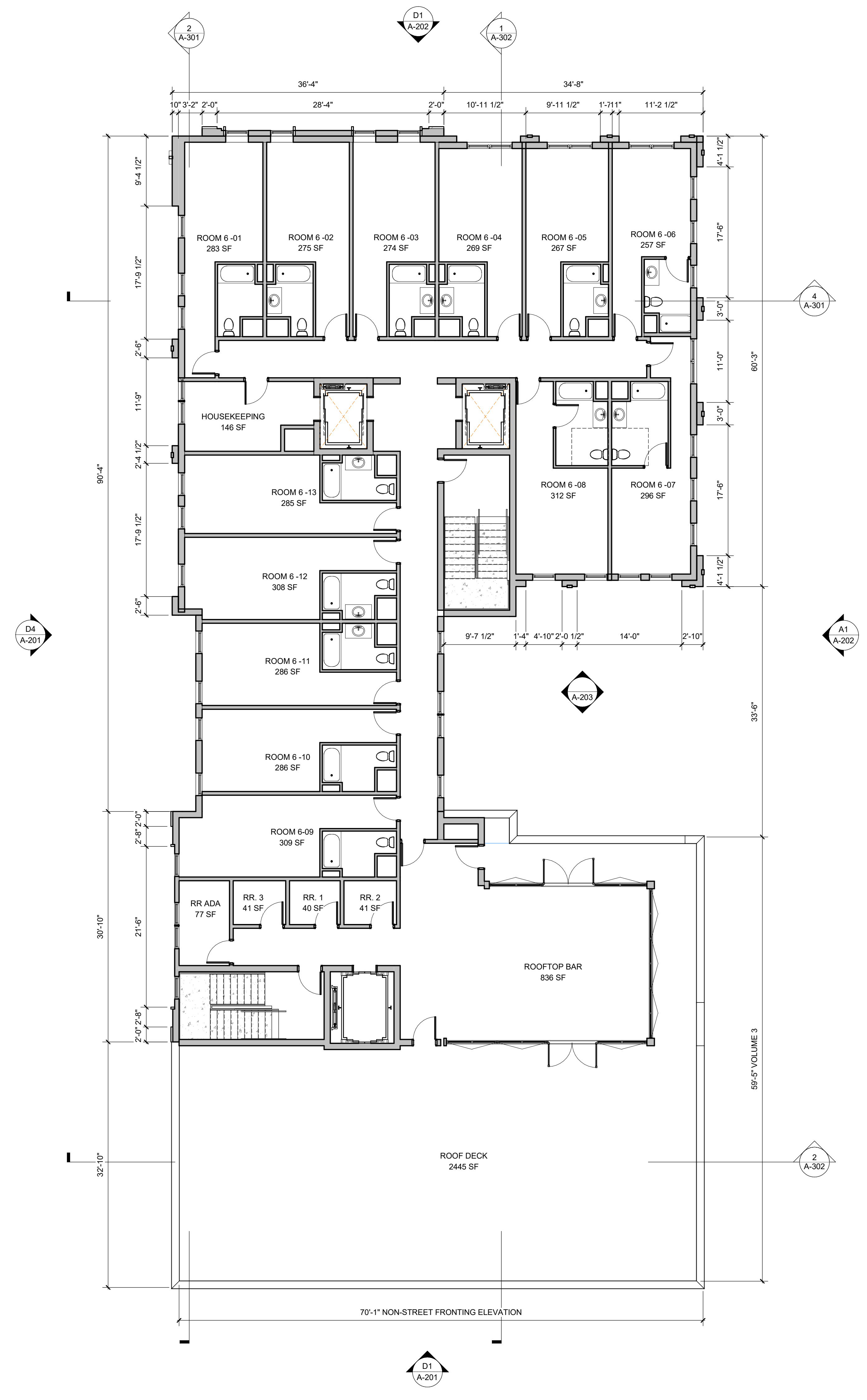


**A1 FLOOR PLAN- LEVEL 4**  
1/8" = 1'-0"

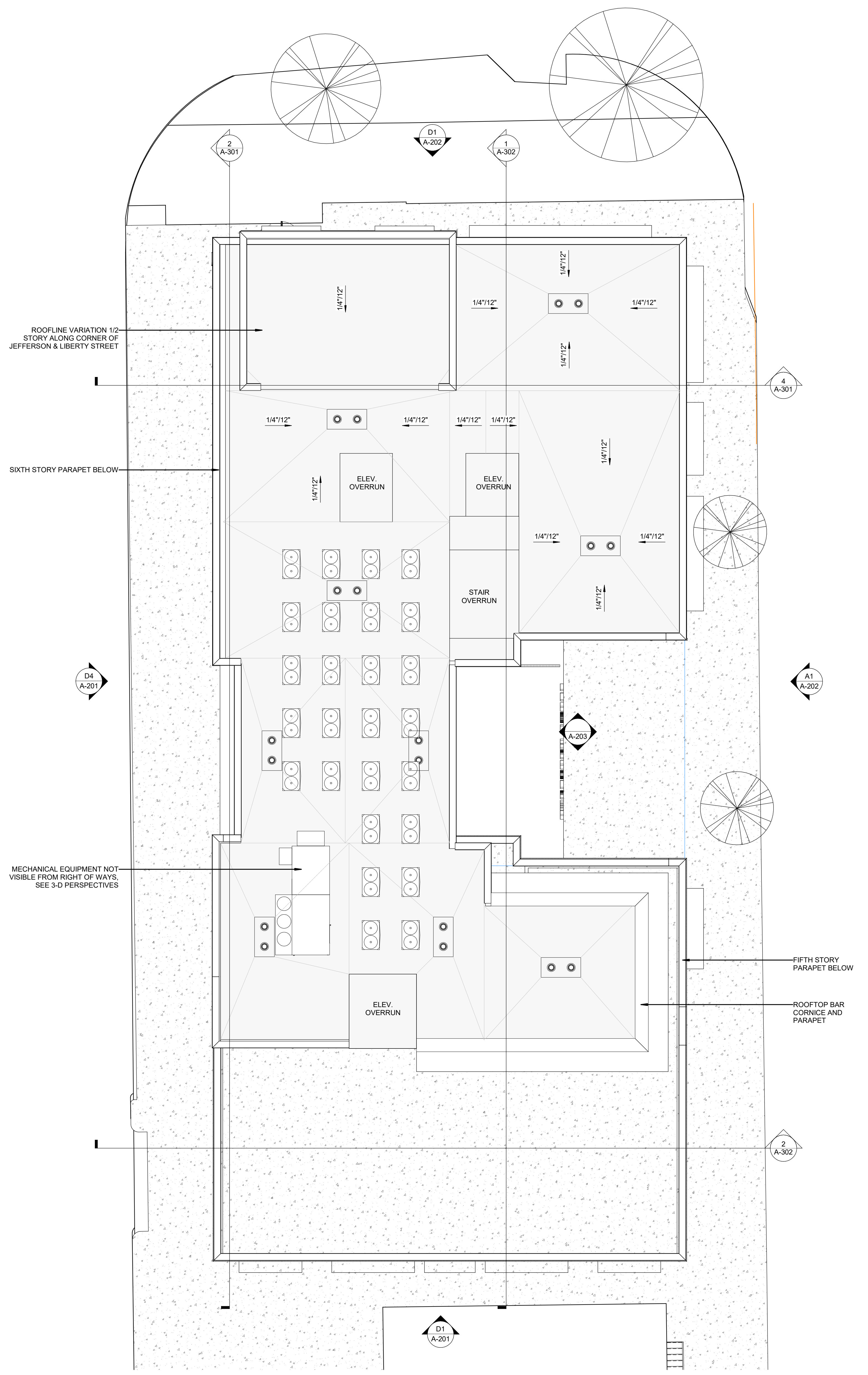


**A3 FLOOR PLAN- LEVEL 5**  
1/8" = 1'-0"

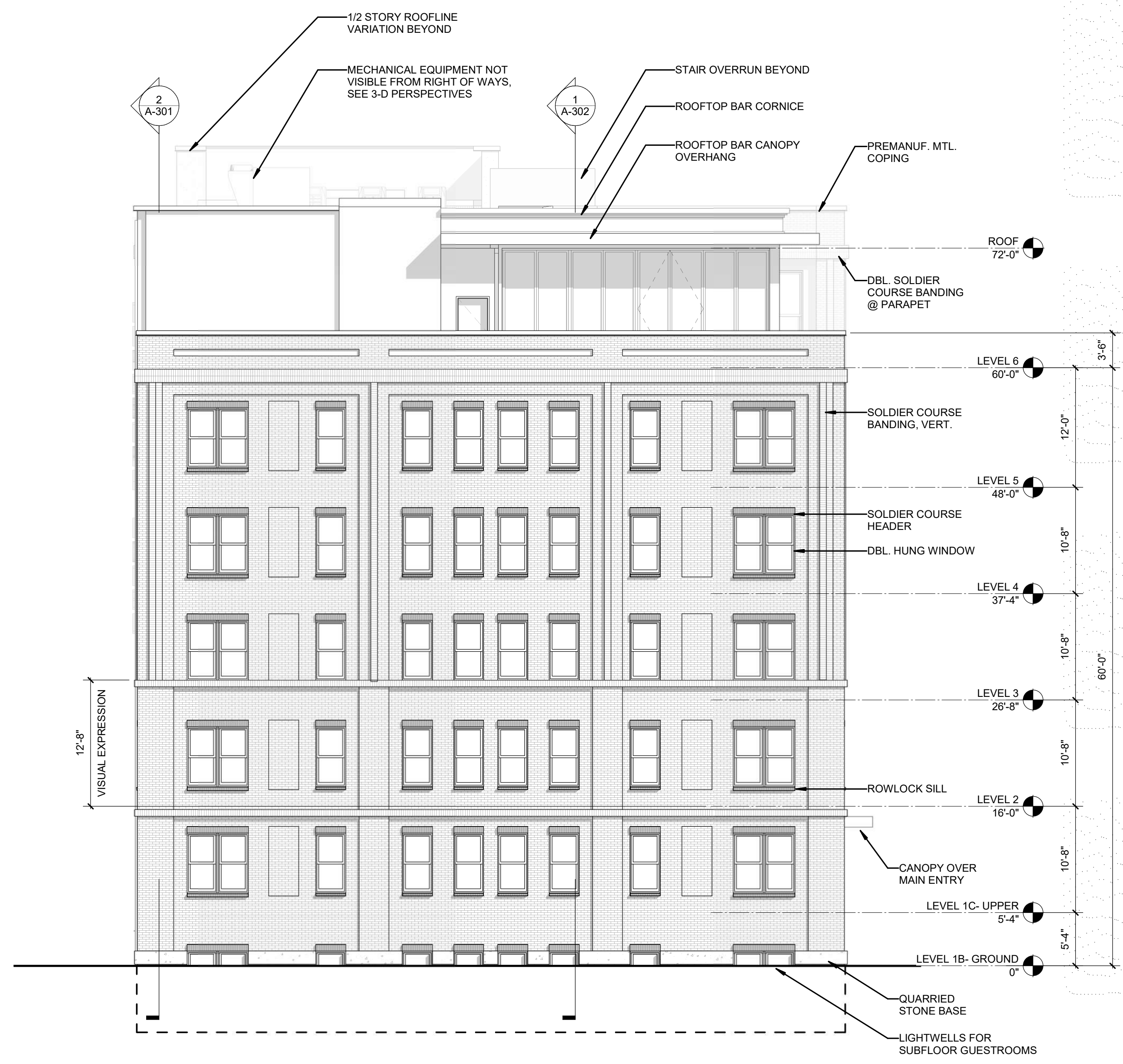




1 FLOOR PLAN- LEVEL 6  
1/8" = 1'-0"



2 ROOF PLAN- PARTIAL  
1/8" = 1'-0"



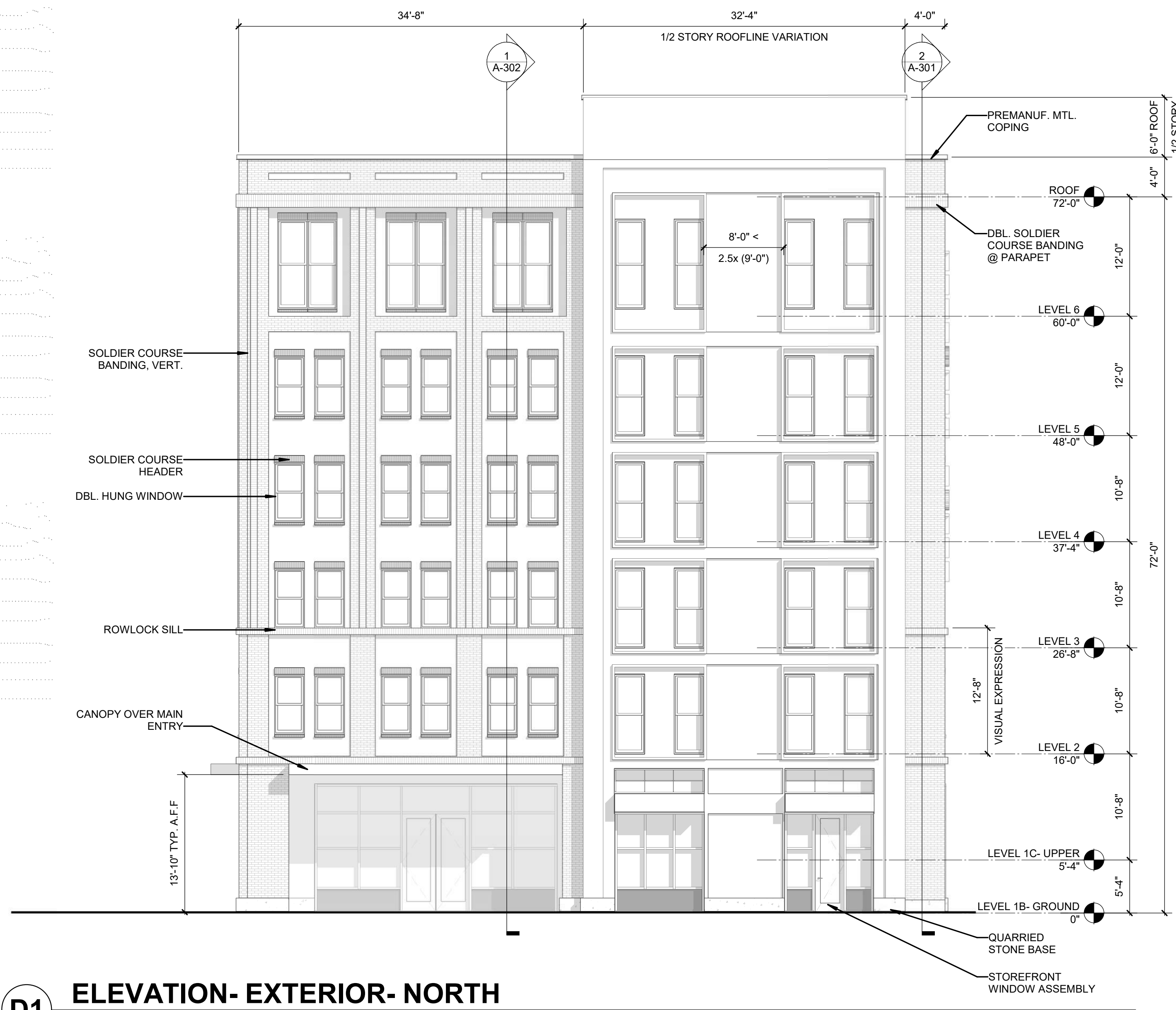
**D1 ELEVATION- EXTERIOR- SOUTH**  
1/8" = 1'-0"

GLAZING (GROUND FLOOR)	
STREET FACADE	GLAZING PERCENTAGE (55% REQ.)
TATTNALL STREET	67.4%
LIBERTY STREET	56.4%
JEFFERSON STREET	55.0%

GLAZING (UPPER FLOORS)	
STREET FACADE	GLAZING PERCENTAGE (20% REQ.)
TATTNALL STREET	23.4%
LIBERTY STREET	30.3%
JEFFERSON STREET	23.4%



**D4 ELEVATION- EXTERIOR- WEST**  
1/8" = 1'-0"



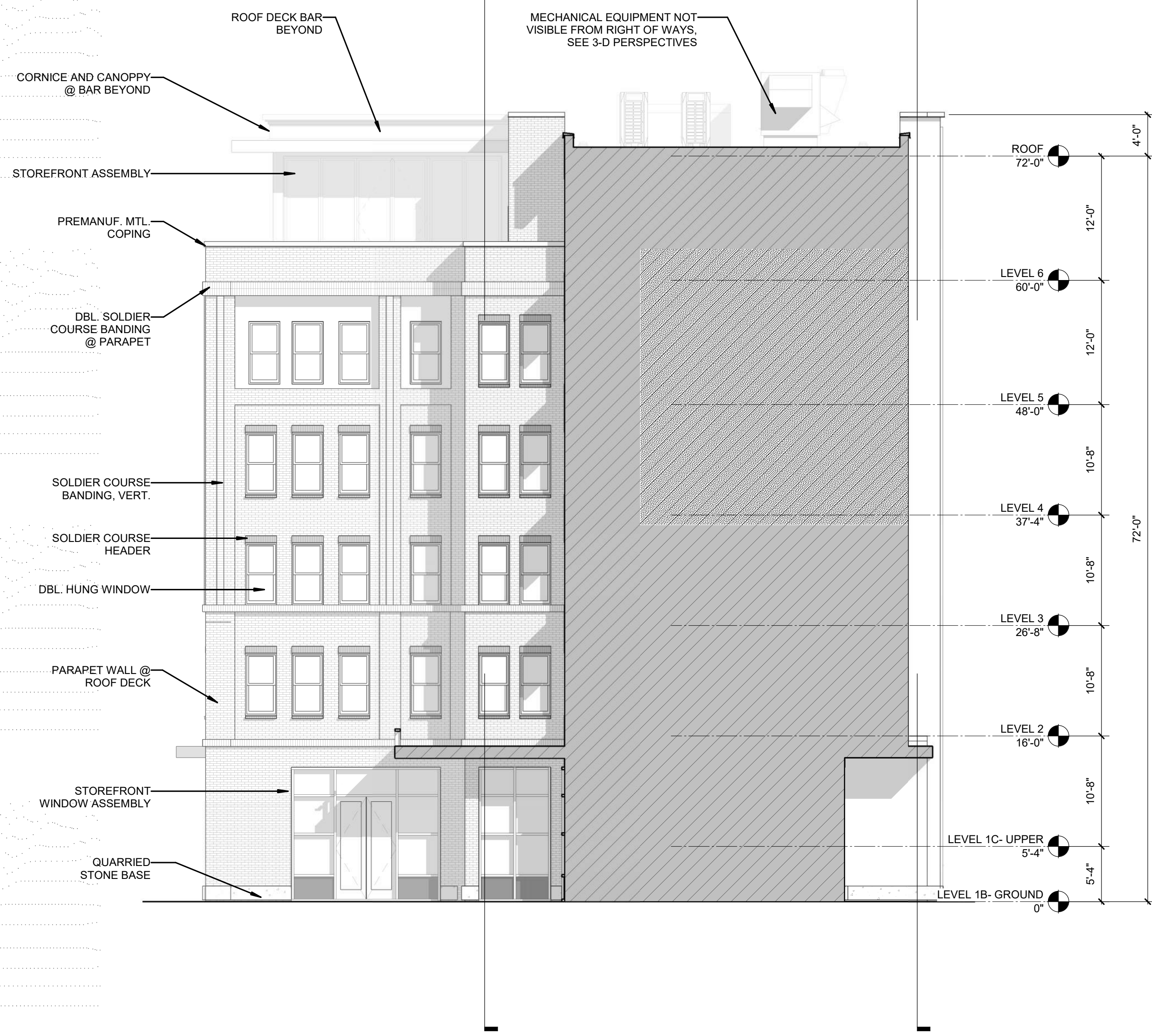
**D1 ELEVATION- EXTERIOR- NORTH**  
1/8" = 1'-0"

GLAZING (GROUND FLOOR)	
STREET FACADE	GLAZING PERCENTAGE (55% REQ.)
TATTNALL STREET	67.4%
LIBERTY STREET	56.4%
JEFFERSON STREET	55.0%

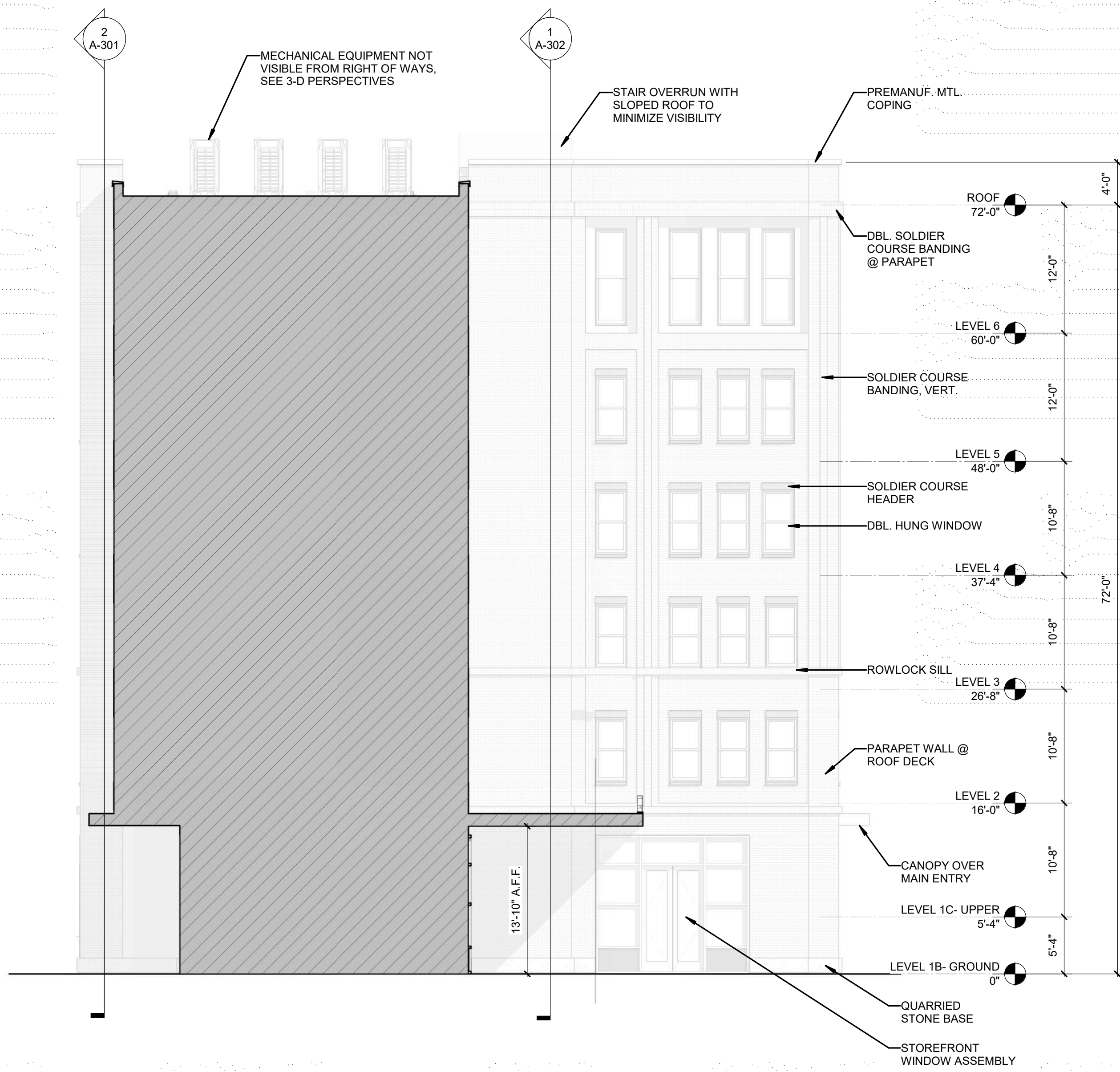
GLAZING (UPPER FLOORS)	
STREET FACADE	GLAZING PERCENTAGE (20% REQ.)
TATTNALL STREET	23.4%
LIBERTY STREET	30.3%
JEFFERSON STREET	23.4%



**A1 ELEVATION- EXTERIOR- EAST**  
1/8" = 1'-0"



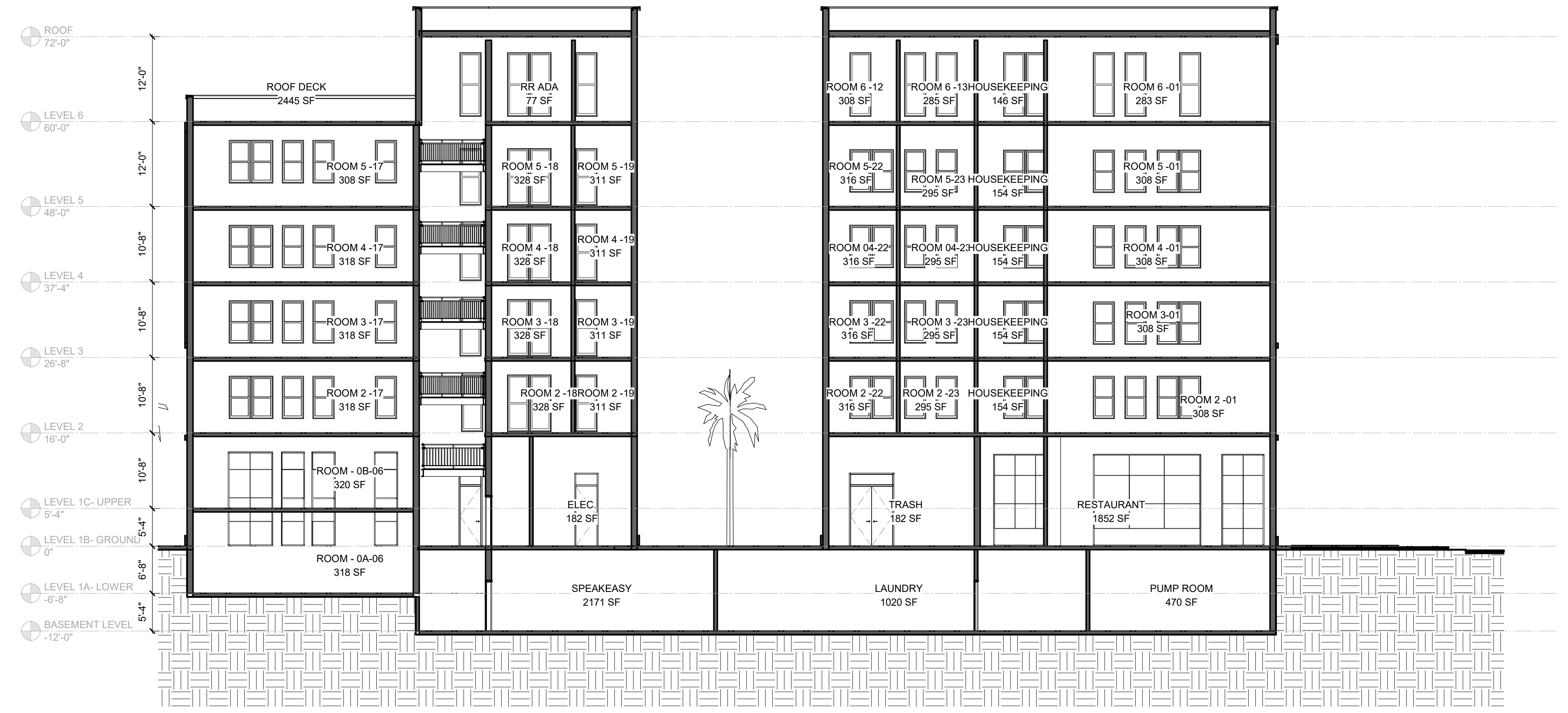
**C1** ELEVATION - EXTERIOR - INTERIOR SOUTH ROOF DECK  
1/8" = 1'-0"



**A1** ELEVATION - EXTERIOR - INTERIOR NORTH ROOF DECK  
1/8" = 1'-0"

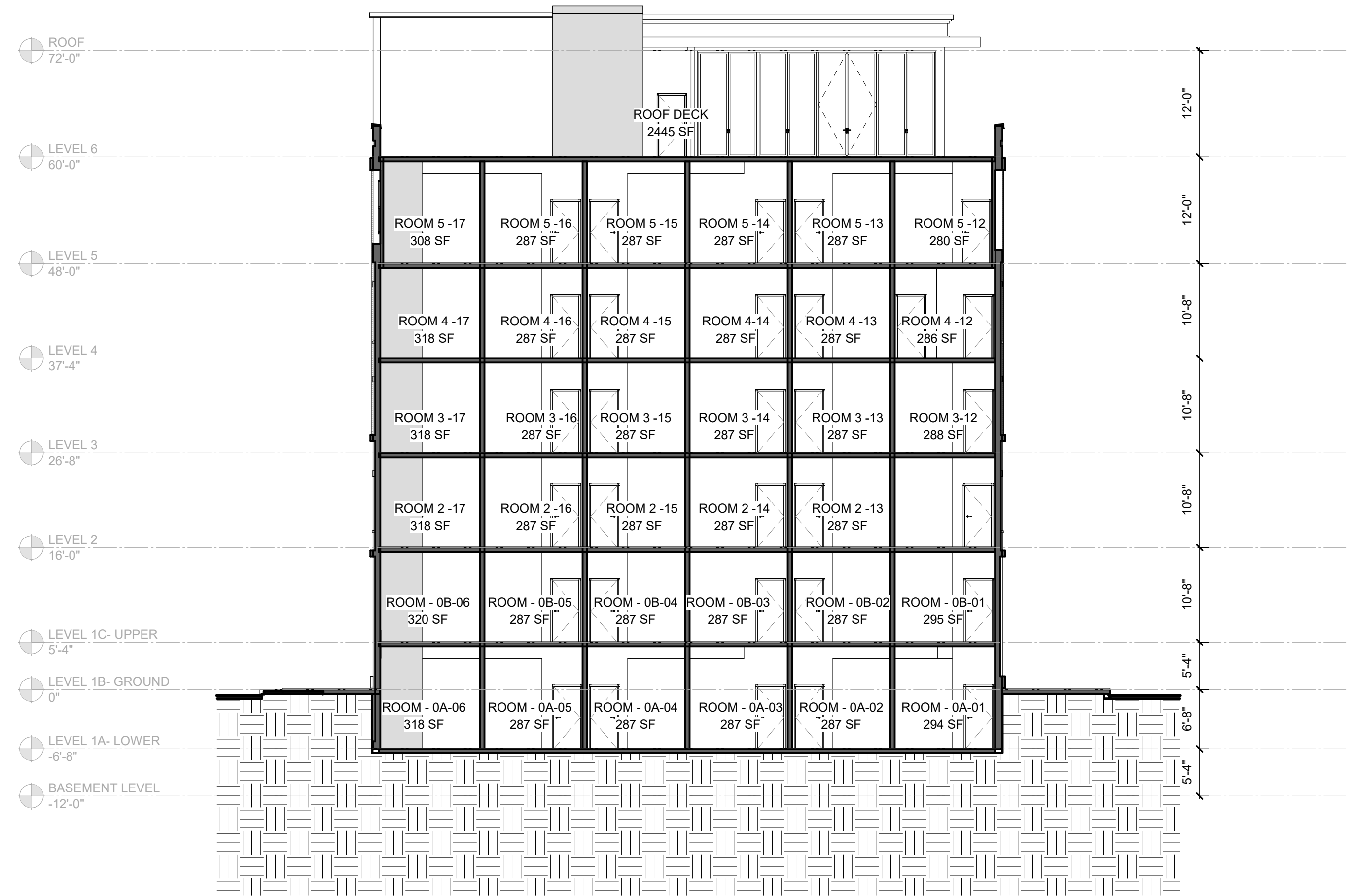


4 EAST/WEST SECTION  
A-301 3/32" = 1'-0"

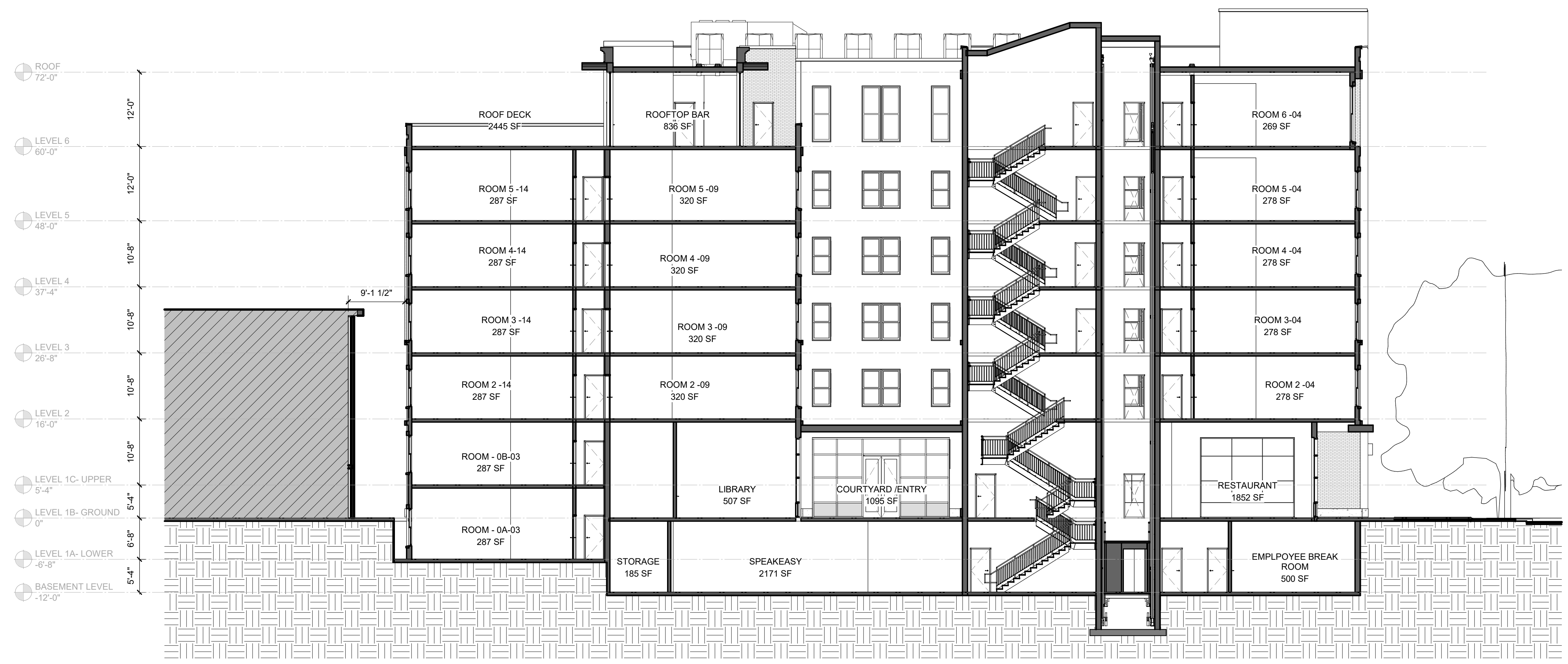


2 NORTH/SOUTH SECTION  
A-301 3/32" = 1'-0"

XXXX.XX.XX



2 EASTWEST SECTION  
A-302 3/32" = 1'-0"



1 NORTH/SOUTH SECTION  
A-302 3/32" = 1'-0"