

CORE MPO TECHNICAL COORDINATING COMMITTEE

PROJECT STATUS UPDATE – STUDY FINDINGS AND ALTERNATIVES

SR 26/US 80 CORRIDOR STUDY

PI No. 0018344, Chatham County, GA
August 17, 2023



The Kimley-Horn Team



Chris Marsengill, P.E., PTOE
Project Manager



Rhodes Hunt, P.E.
Deputy Project Manager



Denise Grabowski, AICP, LEED AP
Stakeholder Engagement

Kimley»»Horn

symbioscity

PEOPLE + PLACE + PLANET

Agenda



Meeting Purpose



Findings Recap

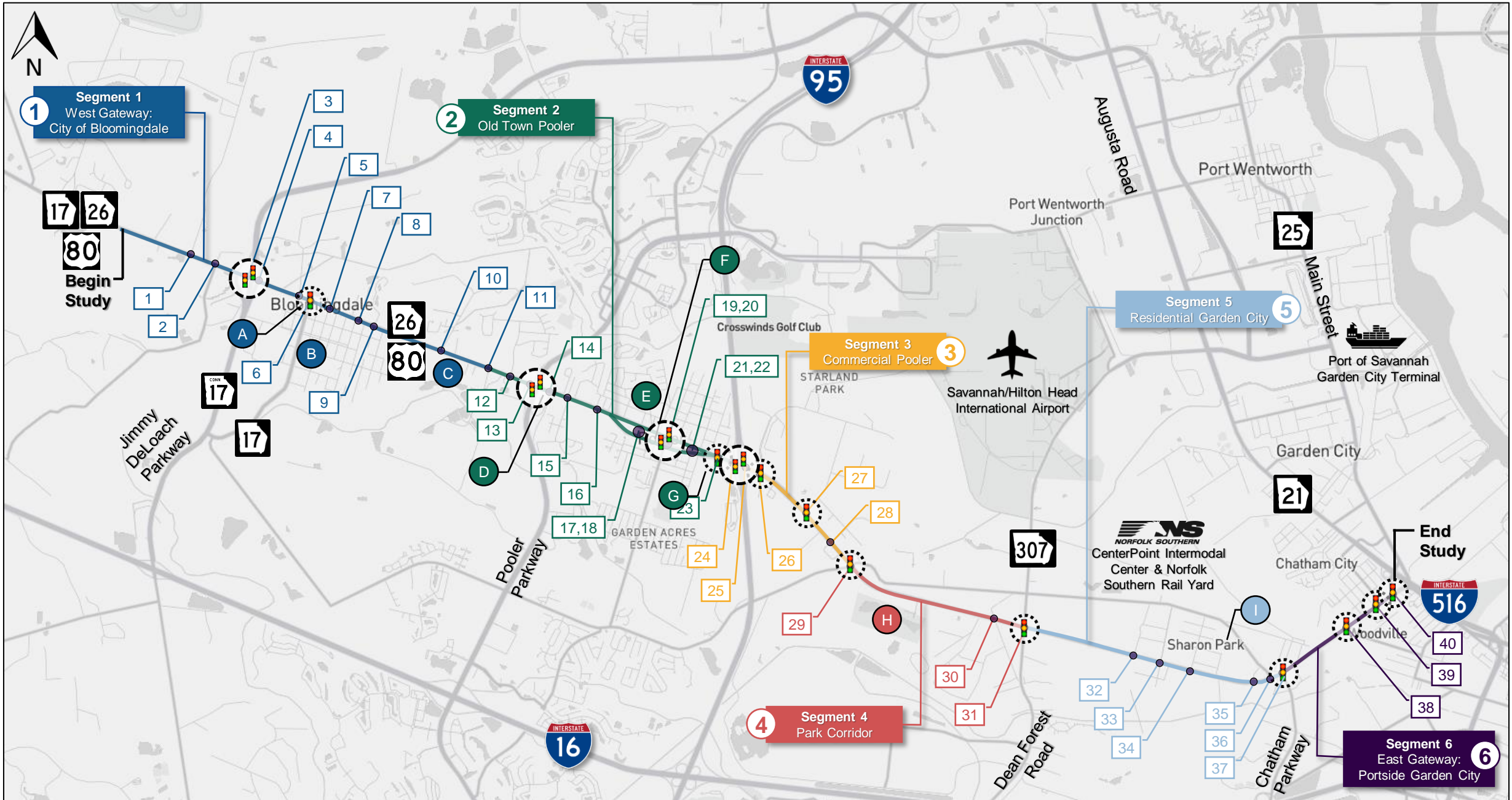


Study Recommendations

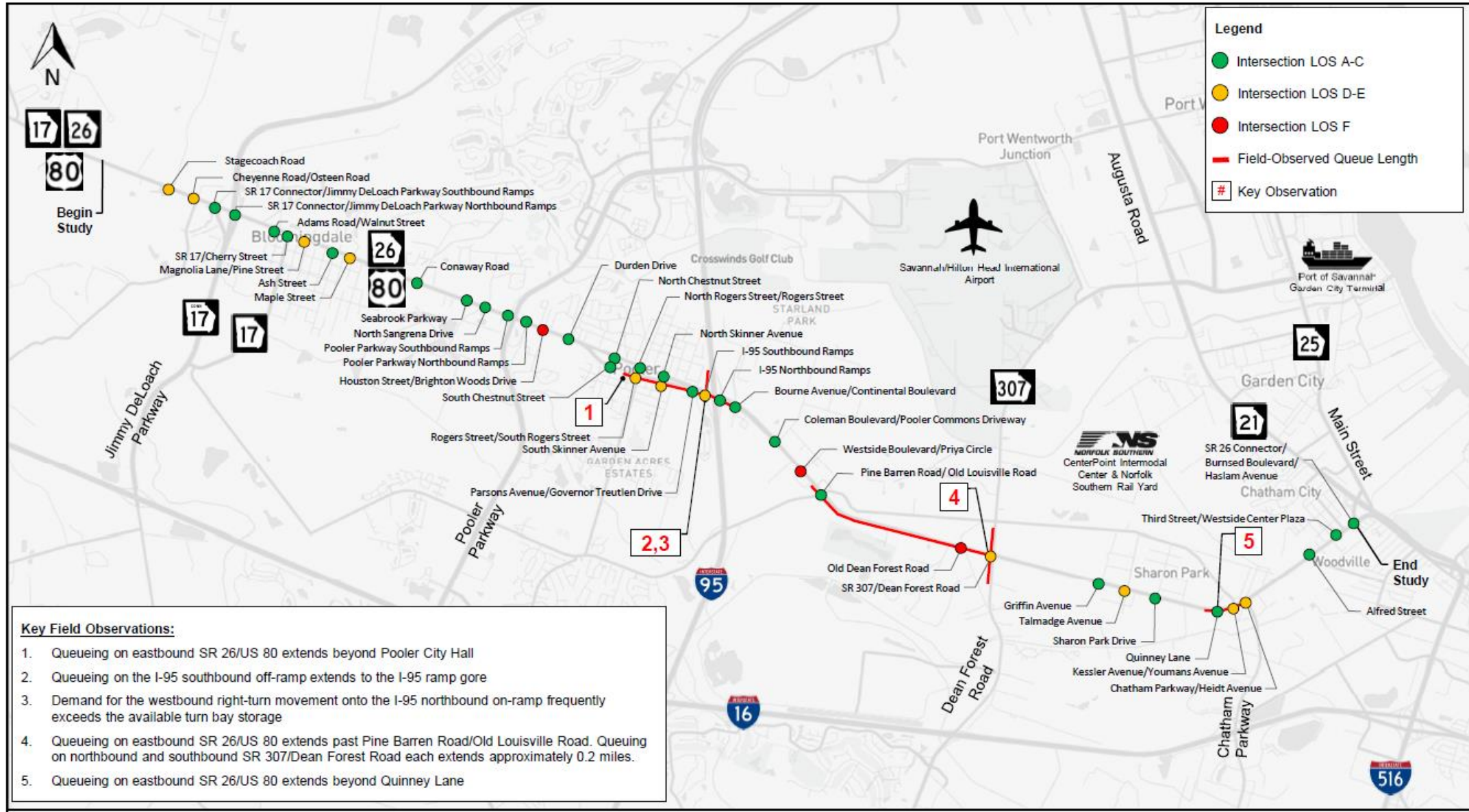


Next Steps

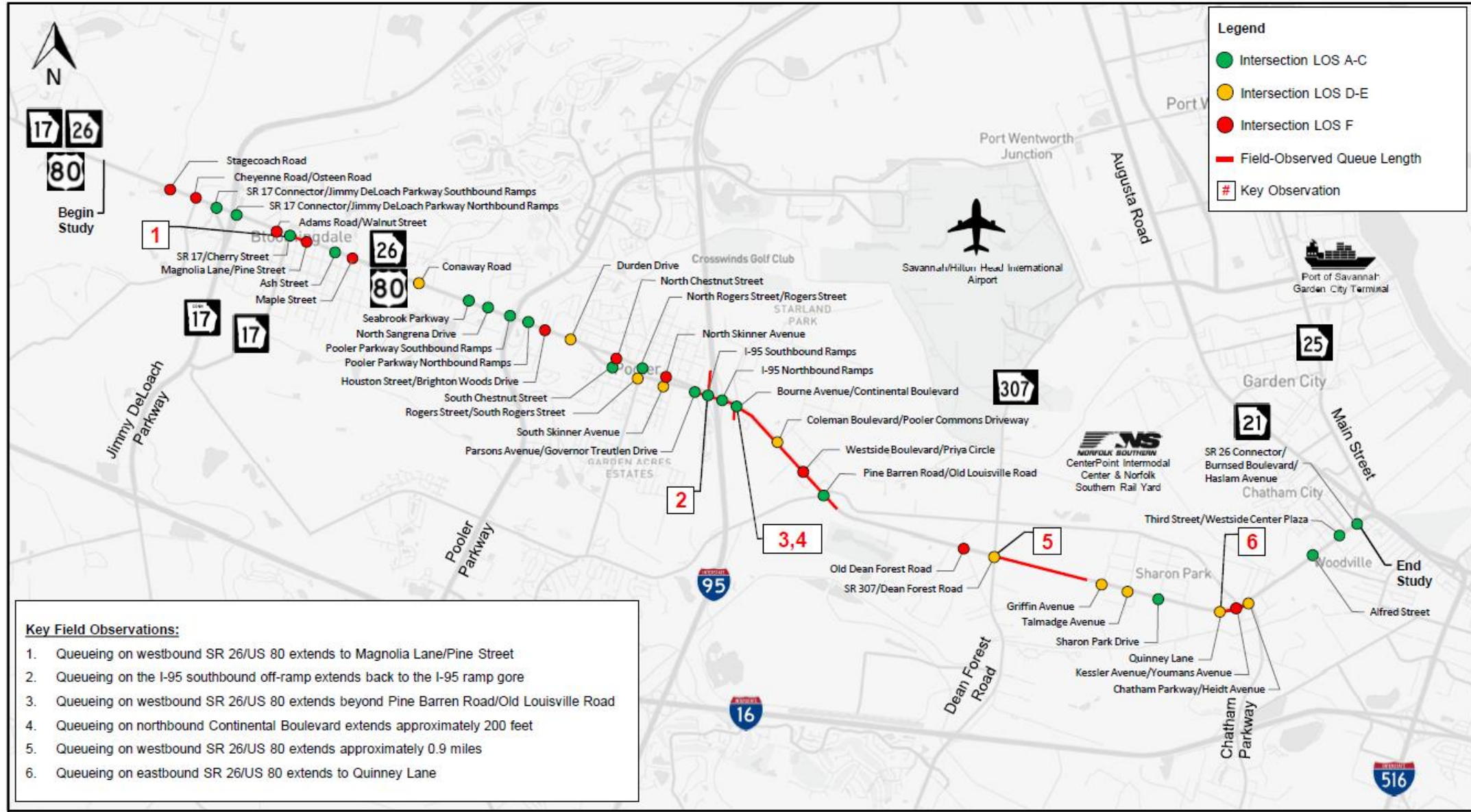
Corridor Overview



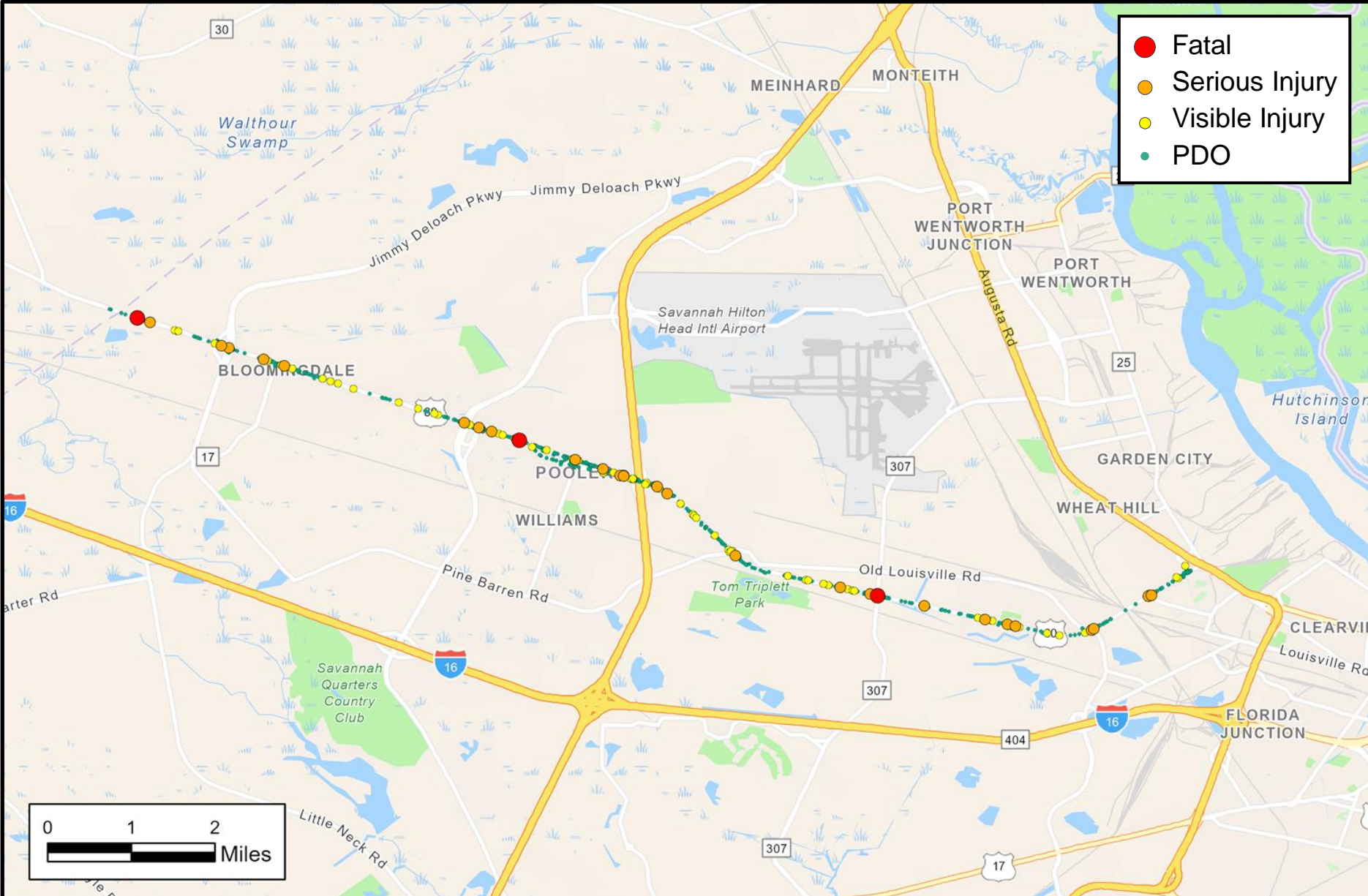
Traffic Summary – AM Peak



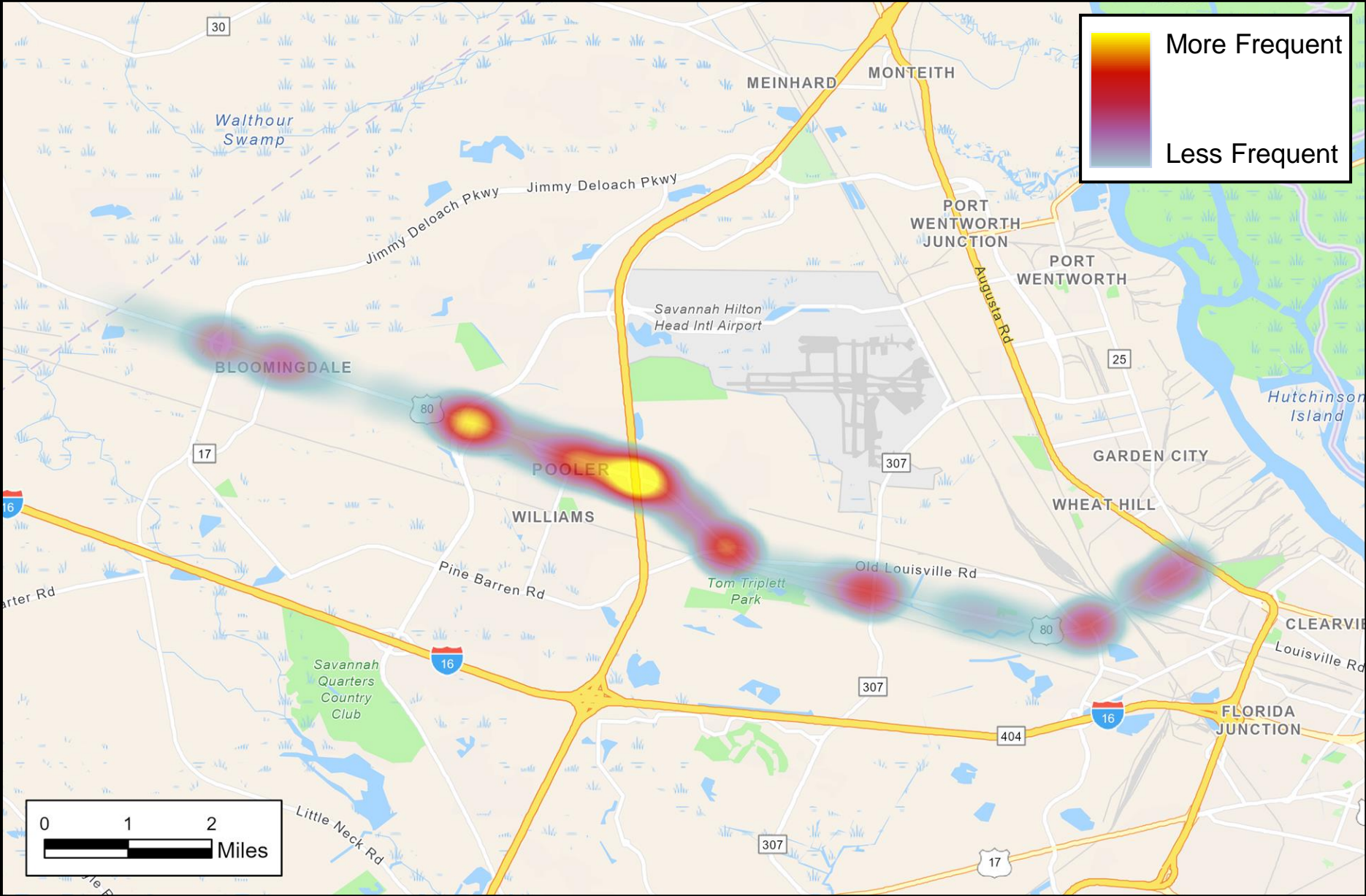
Traffic Summary – PM Peak



Crash Severity Map



Crash Location Map





SR 26/US 80 CORRIDOR STUDY

Needs Summary

Access management strategies should be prioritized

Capacity and safety at key intersections should be investigated

Transit, pedestrian, and bicycle facilities should be addressed



SR 26/US 80 CORRIDOR STUDY

Stakeholder Engagement

MPO TCC Corridor Assessment – 08-DEC-2022

MPO Policy Board – 14-DEC-2022

Initial SAT Meeting – 19-DEC-2022

CAT Coordination Meeting – 17-MAY-2023

Public Information Open House – 15-AUG-2023

MPO TCC Study Findings – 17-AUG-2023

MPO Policy Board – 23-AUG-2023



Short-Term Recommendations (0-5 years)

Intersection Improvements

- I-95 Interchange conversion to DDI
- Bourne Avenue/Continental Boulevard
- Old Louisville Road/Pine Barren Road and SR 307/Dean Forest Road Auxiliary Turn Lanes
- Bloomingdale Town Center Signalization

Access Control

- Corridor signal retiming
- Improvements from Quinney Lane to Junction Avenue, including raised median
- Plan for raised median throughout corridor
- Implement innovative intersections

Transit Expansion Strategy



Long-Term Recommendations (5+ years)

Intersections and Grade Separations

- I-95 DDI Capacity Improvements
- Moore Avenue Extension and Signalization
- Old Louisville Road/Pine Barren Road
- SR 307/Dean Forest Road Interchange
- Chatham Parkway

Access control

- Raised median and bike/ped improvements
- Implement innovative intersections with restricted access
- Priority 1: I-95 to Pine Barren Road
- Priority 2: Pooler Parkway to I-95
- Priority 3: Chatham Parkway to Burnsed Boulevard

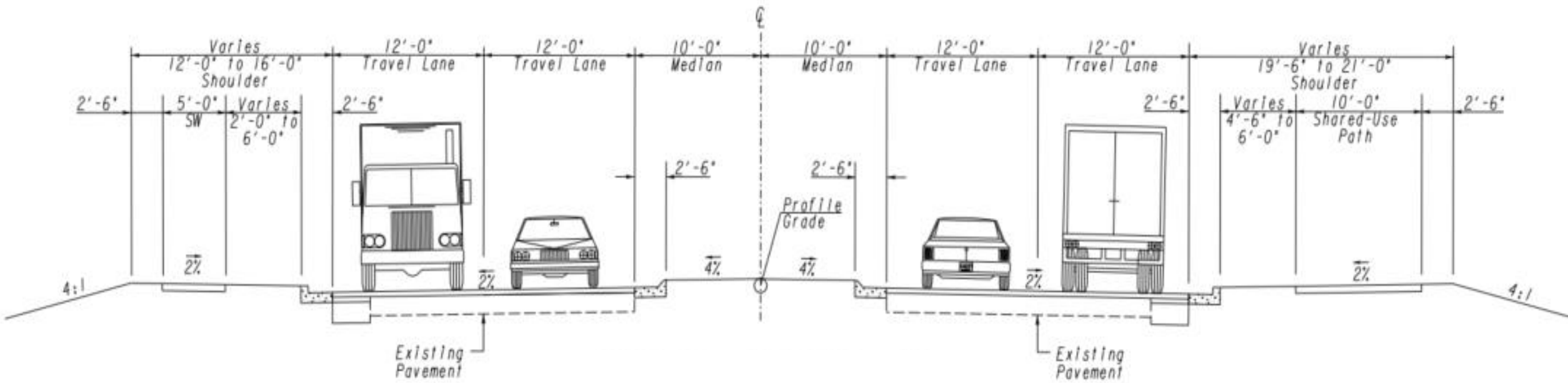


Long-Term Recommendations (Continued)

Pedestrian and Bicycle Facilities

- Shared-use path on both sides of SR 26/US 80 between Bloomingdale Town Center and Wilkes Street
- Shared-use path and sidewalk on SR 26/US 80 between Wilkes Street and Griffin Avenue
- Shared-use path on both sides of SR 26/US 80 between Griffin Avenue and Chatham Parkway
- Shared-use path and sidewalk on SR 26/US 80 between Chatham Parkway and Burnsed Boulevard

Transit Expansion



Raised Median Typical Section



SR 26/US 80 in Bloomingdale: Reduced Conflict Intersections



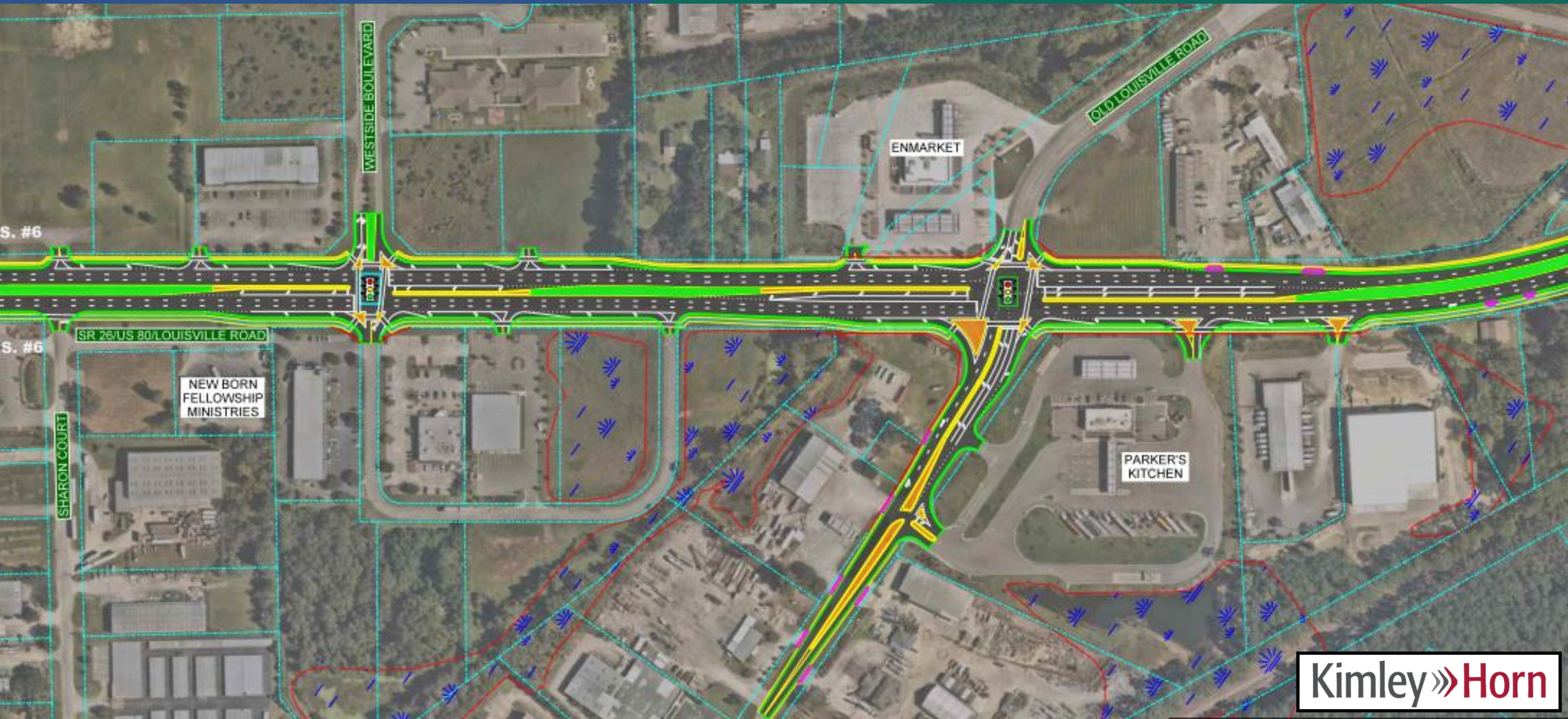


SR 26/US 80 at I-95: Diverging Diamond Interchange



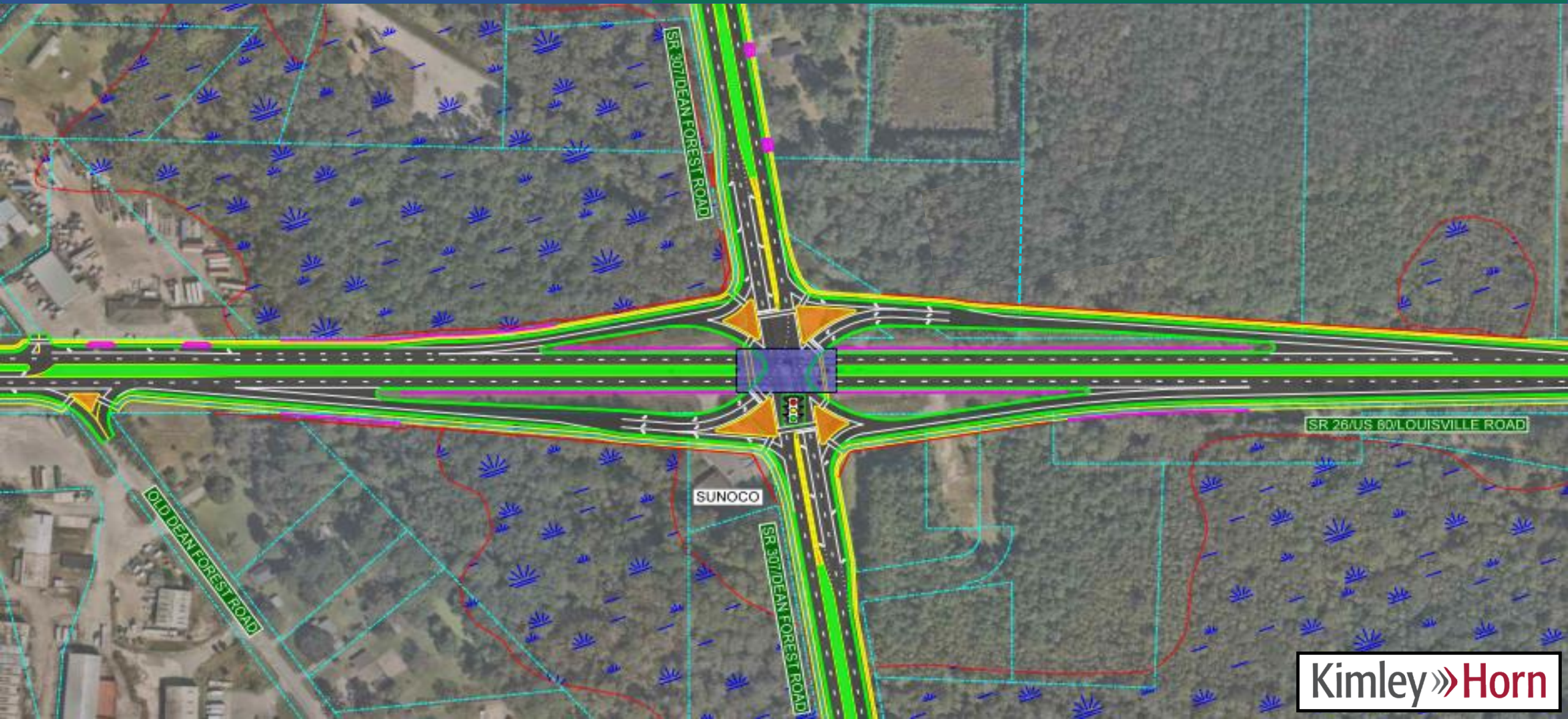


SR 26/US 80 at Pine Barren Road: Access Control and Intersection Improvements





SR 26/US 80 at SR 307/Dean Forest Road: Single-Point Urban Interchange





SR 26/US 80 at Chatham Parkway



THANK YOU!

CHRIS MARSENGILL, PE, PTOE

912-328-4414

CHRIS.MARSENGILL@KIMLEY-HORN.COM

RHODES HUNT, PE

912-328-4445

RHODES.HUNT@KIMLEY-HORN.COM

