

EXPLANATION OF THE TRAFFIC COUNT DATA

The traffic volumes shown in red on these maps are estimates of the Annual Average Daily Traffic (AADT) on the individual roadway. By definition, traffic volumes are counts of the number of vehicles passing a given point on a roadway during a continuous specified period of time. These counts are adjusted to represent an average day in 2000 and include all vehicles - automobiles and trucks. All of the counts are totals for both directions of travel on two-way roadways or the single direction on one-way streets.

These traffic counts were taken by the Georgia Department of Transportation as part of their annual "coverage count" program to monitor the volumes of traffic throughout the State. They are furnished to the local agencies responsible for transportation programs usually at the end of the calendar year after all of the counts have been completed. The Department of Transportation counts

mechanical counters that are battery operated and employ pneumatic detectors (road tubes) placed across the roadways. On divided or multilane roadways, two counters are required to record the traffic in both directions of traffic. The counts are recorded on

paper tapes or data modules at the end of each hour along with the time information. The counters remain in place for at least a continuous 24-hour period and longer if additional accuracy is desired or there is a problem with the equipment or an unusual traffic condition.

The Georgia Department of Transportation also operates three continuous counting stations in Chatham County - one on Oglethorpe Avenue, one on Abercorn Street, and one on Interstate 95. These counters

record traffic every day of the year and provide the information to adjust or factor all other "short-term" counts to an annual average daily count. The counting and adjusting procedures that are used have been designed to maximize the accuracy of the information with available resources. Based on detailed studies, the accuracy of these counts is considered to yield data with a precision of plus or minus 10 percent at a 95 percent level of confidence.

TYPICAL DAILY TRAFFIC VARIATIONS

One of the counts that was taken on Derenne Avenue just east of Waters Avenue in a prior year has been summarized to illustrate typical hourly fluctuations of traffic volumes on the principal streets of Savannah. The hourly traffic has been graphed for a typical weekday (Exhibit 1), for Saturday (Exhibit 2), and for Sunday (Exhibit 3). The average weekday traffic count at that location was 20,478 vehicles. On Saturday, the

count was approximately 6 percent greater at 21,729. On Sunday, the count was 16,653 vehicles or almost 19 percent less than the average weekday. These percentages are typical of the values found in most urban areas.

The traffic pattern for a typical weekday shown in Exhibit 1 illustrates the dominance of the morning and afternoon peak periods as compared to the midday and evening travel. About one-third (33.6%) of the total daily traffic volume occurs during the 2-hour morning and 2-hour afternoon

peak periods on weekdays. The highest hourly volume during the weekday is between 5 and 6 PM with 9.6 percent of the daily traffic recorded.

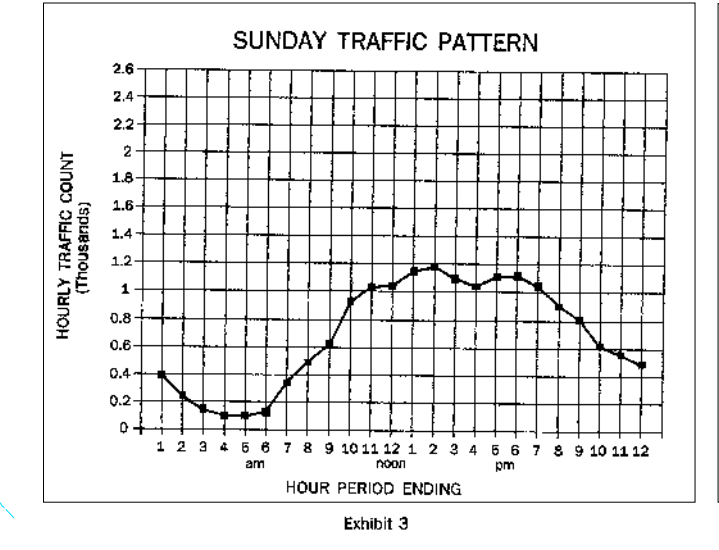
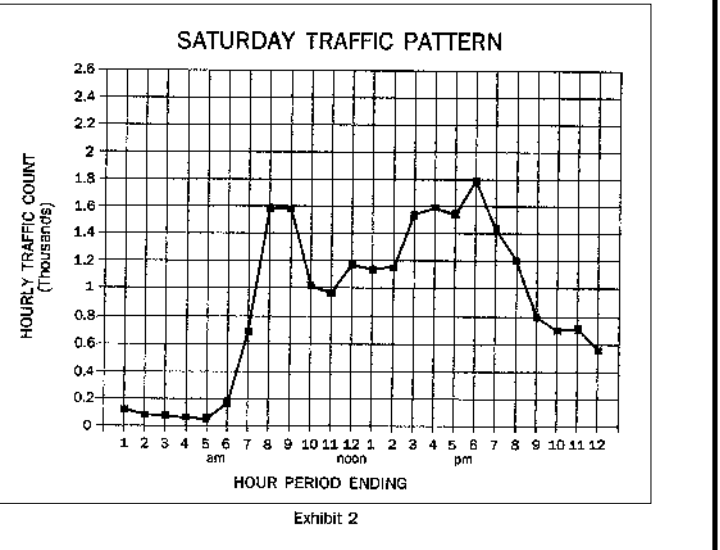
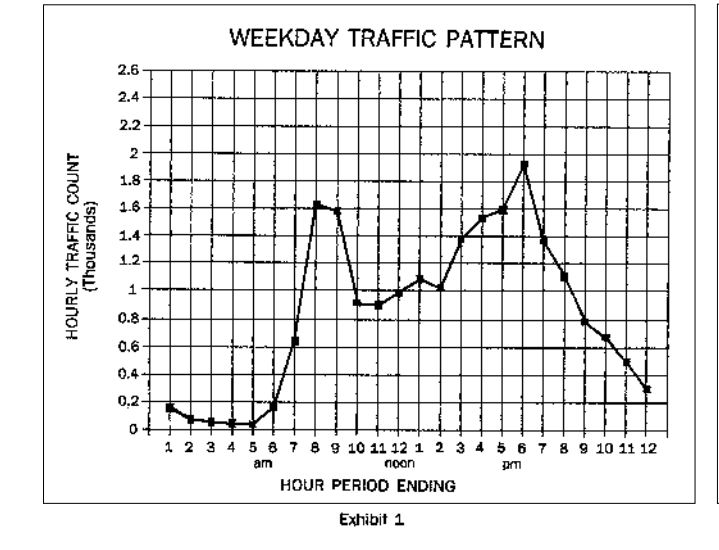
According to Exhibit 2, the traffic pattern on Saturday is very similar to the weekday pattern with somewhat more traffic occurring in the late afternoon and early evening hours. The Sunday traffic pattern, shown in Exhibit 3, has no pronounced peak times and is relatively constant from about 9 AM until 6 PM.

ESTIMATING AN HOURLY TRAFFIC COUNT

A reasonable estimate of an hourly traffic volume may be calculated from the daily traffic volumes shown on these maps by applying the percentage values shown in Exhibit 4. These percentages convert an annual average daily traffic count to an hourly volume for any hour period on a weekday, Saturday, or Sunday.

For example, if the daily traffic count shown in red on these maps

is 10,000 vehicles and an estimate of the number of vehicles using the roadway from 5:00 to 6:00 PM, during the weekday was required, the 10,000 would be multiplied by 0.096 (9.6%) according to the percentage shown in Exhibit 4. The estimated number of vehicles in this one-hour period would be 960.



PERCENT BY HOUR

WEEKDAY	SATURDAY	SUNDAY
AM		
1	0.6	1.9
2	0.4	1.7
3	0.2	0.5
4	0.2	0.5
5	0.2	0.5
6	0.2	0.5
7	0.2	0.5
8	0.2	0.5
9	0.2	0.5
10	0.2	0.5
11	0.2	0.5
12	0.2	0.5
NOON		
1	0.2	0.5
2	0.2	0.5
3	0.2	0.5
4	0.2	0.5
5	0.2	0.5
6	0.2	0.5
7	0.2	0.5
8	0.2	0.5
9	0.2	0.5
10	0.2	0.5
11	0.2	0.5
12	0.2	0.5
PM		
1	0.2	0.5
2	0.2	0.5
3	0.2	0.5
4	0.2	0.5
5	0.2	0.5
6	0.2	0.5
7	0.2	0.5
8	0.2	0.5
9	0.2	0.5
10	0.2	0.5
11	0.2	0.5
12	0.2	0.5
TOTALS	106.5	92.8

Exhibit 4

DISCLAIMER

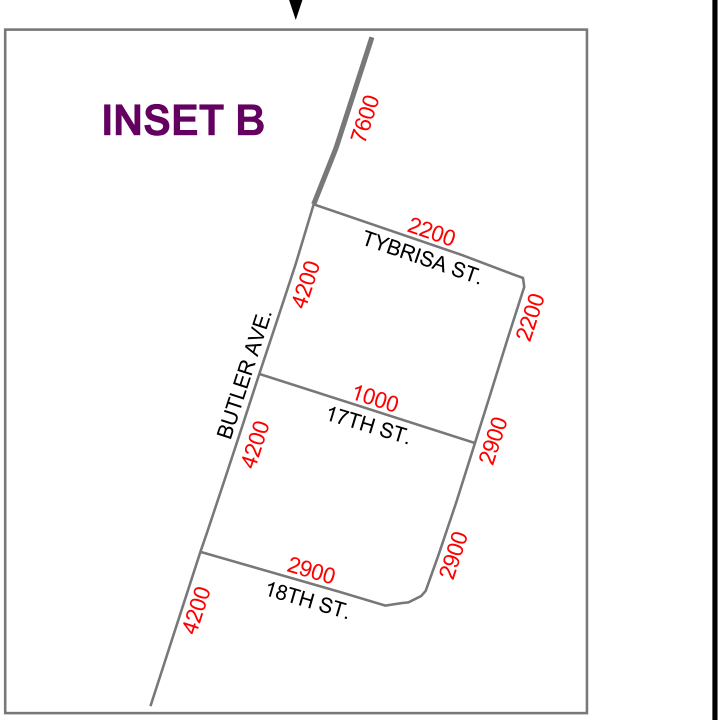
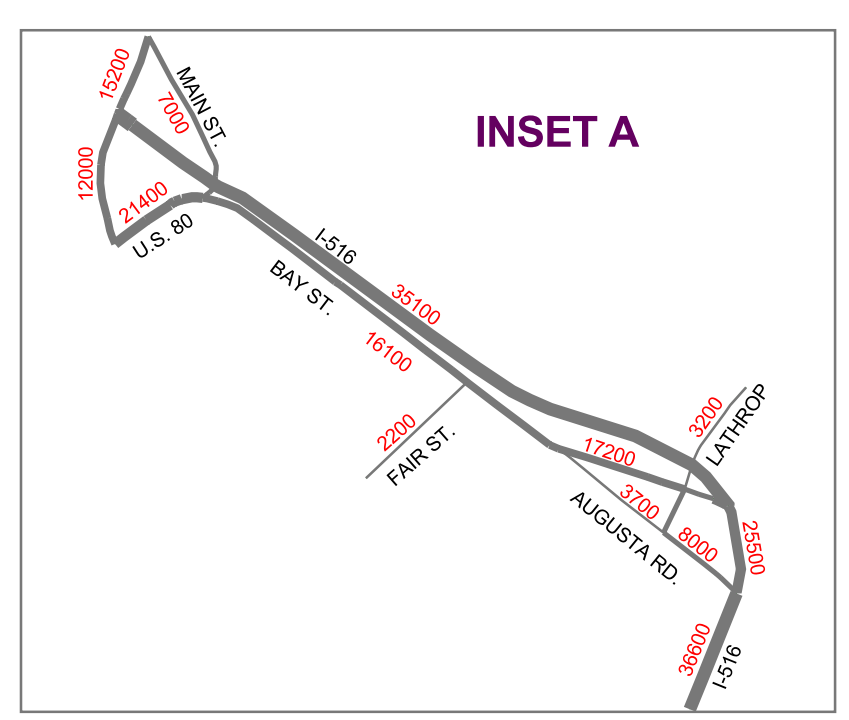
The contents of this map reflect the views of the analyst who is responsible for the facts and the accuracy of the data presented hereon. The contents do not necessarily reflect the official views or policies of the State of Georgia or the Federal Highway Administration. This map does not constitute a standard, specification, or regulation.

2000 AVERAGE DAILY TRAFFIC for Chatham County - Savannah, Georgia

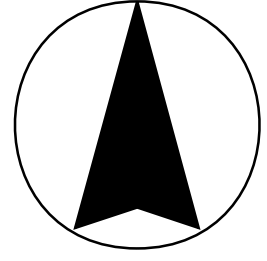
Prepared by the
Chatham County - Savannah Metropolitan Planning Commission
110 East State Street
P. O. Box 8246
Savannah, Georgia 31412-8246
Phone: (912) 651 - 1440 Fax: (912) 651 - 1480

in cooperation with the
Georgia Department of Transportation
Division of Planning and Programming
and the
U.S. Department of Transportation
Federal Highway Administration

December, 2001



2000 TRAFFIC COUNT MAP CENTRAL SAVANNAH AREA



LEGEND

2000 Average Daily Traffic

- <= 5000
- 5001 - 10000
- 10001 - 20000
- 20001 - 30000
- 30001 - 40000
- > 40000
- Counts Not Available



2000 AVERAGE DAILY TRAFFIC for Central Savannah Area

Prepared by the
Chatham County - Savannah Metropolitan Planning Commission
110 East State Street
P. O. Box 8246
Savannah, Georgia 31412-8246
Phone: (912) 651 - 1440 Fax: (912) 651 - 1480

in cooperation with the

Georgia Department of Transportation
Division of Planning and Programmmg

and the

U.S. Department of Transportation
Federal Highway Administration

December, 2001

DISCLAIMER

The contents of this map reflect the views of the analyst who is responsible for the facts and the accuracy of the data presented hereon. The contents do not necessarily reflect the official views or policies of the State of Georgia or the Federal Highway Administration. This map does not constitute a standard, specification, or regulation.

